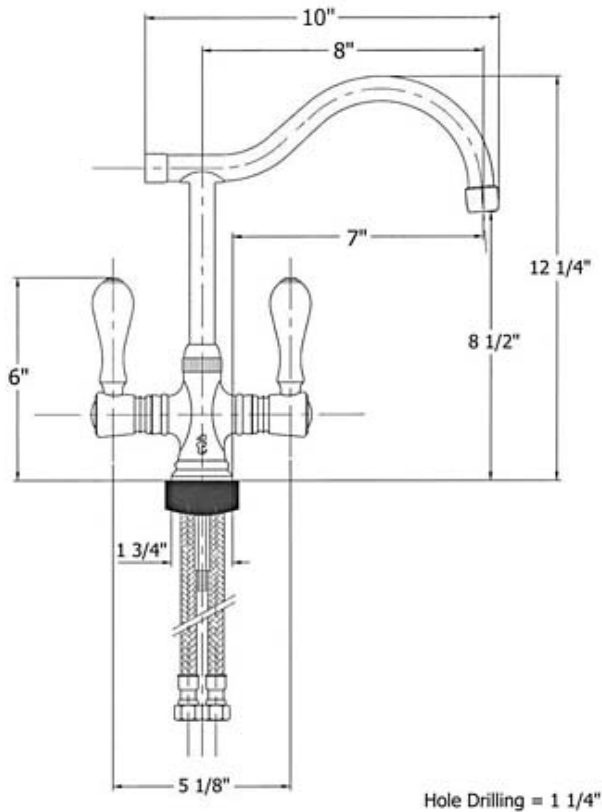


4202 – 'Ostende' Single Hole Mixer



Part #	Description
01	Handle Screw
02	Curved Ring
04	Finished Flange
05	Handle Socket
06	Spout
07	Nylon Clip
08	Rubber O-rings
09	Finished Nut
11	Spout Washer
12	Aerator Filter
13	Aerator Cover
14	Body
16	Nylon Heat Separator
17	Flexible Hose O-ring
18	3/8" Flexible Hose
20	Threaded Stem
22	Tightening Set
81	Hot 1/4 Turn Cartridge
82	Cold 1/4 Turn Cartridge
93	Faucet Handle

Technical Information

- Requires 1 1/4" hole drilling
- Flow rate is 2.2 GPM
- Available finishes are Polished Brass(55), Polished Nickel(56), Brushed Nickel(57), Polished Copper & Brass(58), Weathered Copper & Brass(59), Satin Nickel(60)
- This Faucet normally ships with ceramic handles(20). Please specify when ordering if you would prefer wood handles(63).
- Please see Cleaning Instructions for finish care and maintenance information

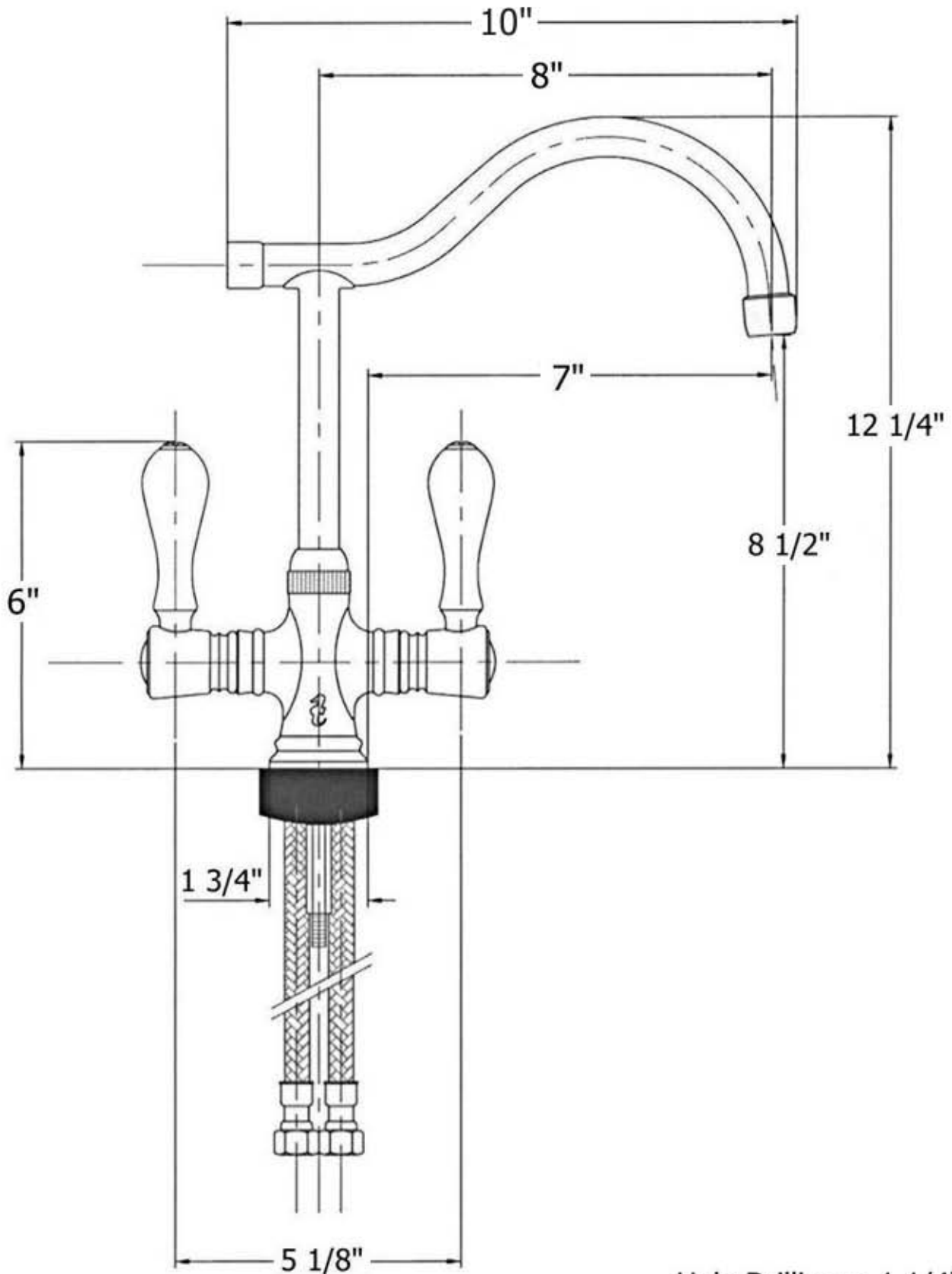
Please follow example when ordering parts for 'Ostende' Mixer.

- To order part#06 – **Spout**
 - 9420206xx
- Please substitute finish number needed in place of xx.
- To order a part that is not finished use 00



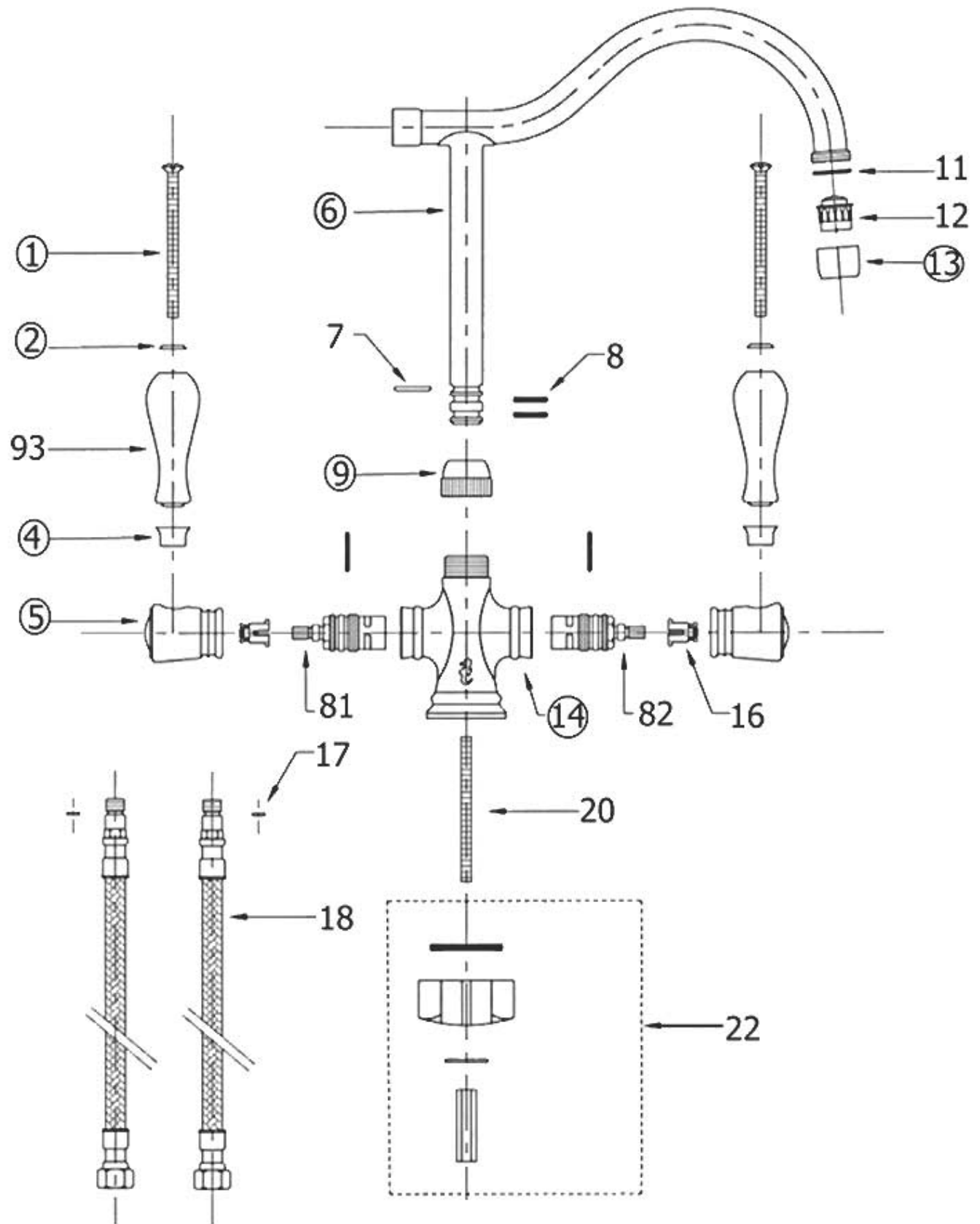
Herbeau[®]
L'Art du Sanitaire depuis 1857

4202 - 'Ostende' Single Hole Mixer



Hole Drilling = 1 1/4"

4202 - 'Ostende' Single Hole Mixer



○ - Finished Pieces