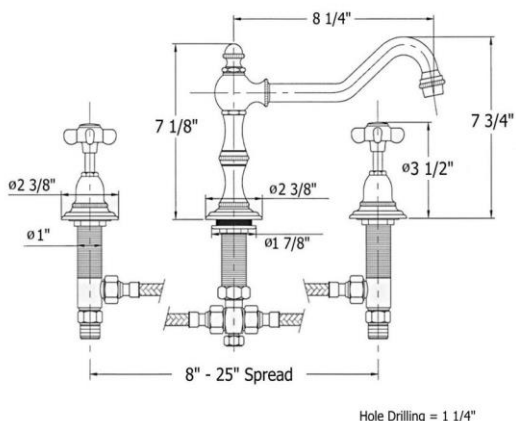


3021 - 'Royale' Three Hole Kitchen Mixer



Technical Information

- IAPMO: NSF/ANSI 61, NSF/ANSI 372 & ASME A112.18.1/CSA B125.1 certified.
- Uses Flühs ceramic cartridges.
- Requires 1 1/4" hole drilling.
- Maximum flow rate is 1.2 GPM with new low flow restrictor.
- 8" – 25" spread.
- Swiveling spout.
- Available finishes are French Weathered Brass (**47**), Polished Chrome (**48**), SoliBrass (**49**), Lacquered Matte Black Nickel (**50**), Polished Brass (**55**), Polished Nickel (**56**), Brushed Nickel (**57**), Satin Nickel (**60**), Antique Lacquered Copper (**67**), Antique Lacquered Brass (**68**), Weathered Brass (**70**), Lacquered Polished Black Nickel (**71**) and Lacquered Polished Copper (**80**).
- Please See Cleaning Instructions: <http://herbeau.com/CleaningAll.pdf> For Finish Care and Maintenance Information.

Please follow example when ordering parts for 'Royale'
Mixer

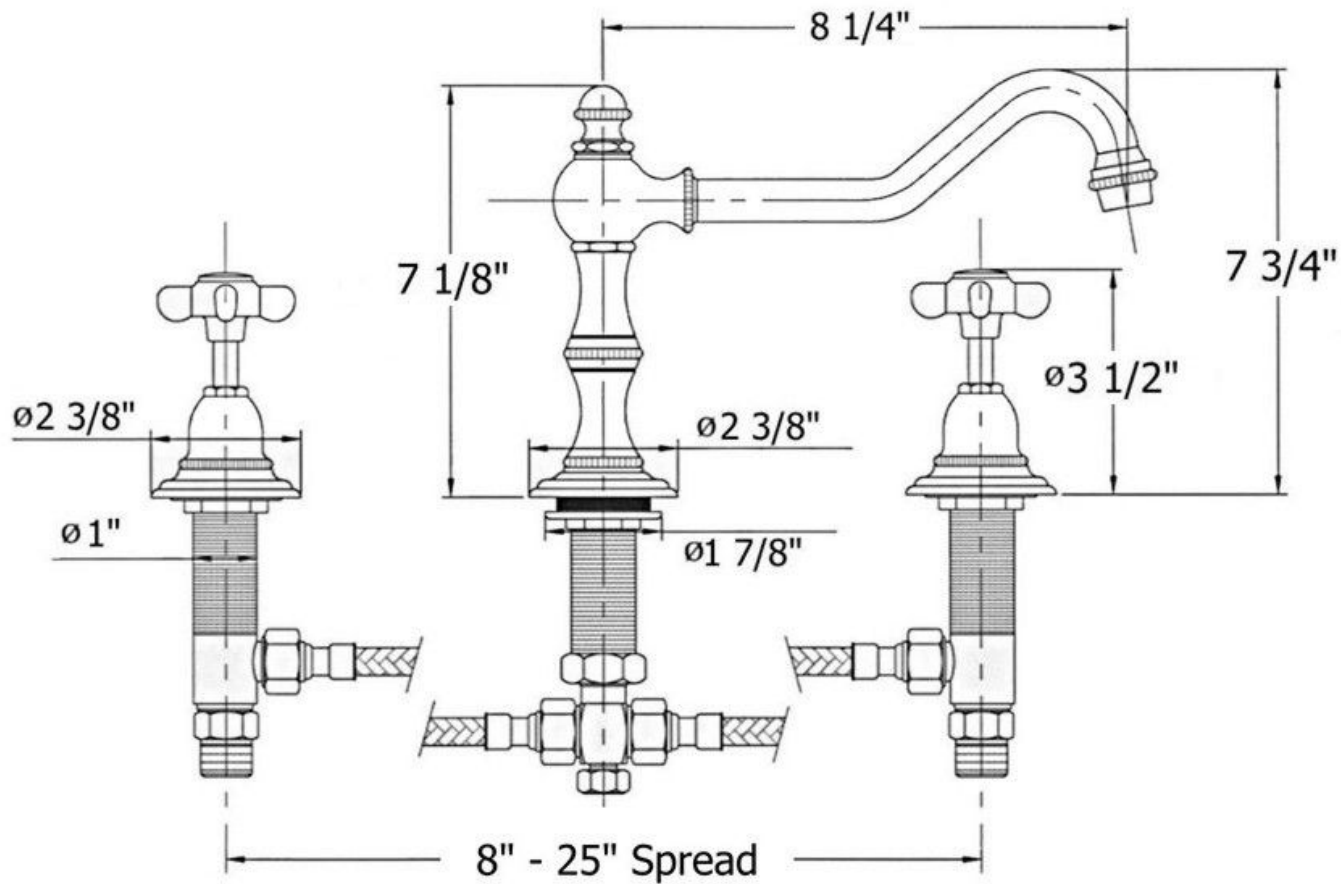
- To order part#23 – Spout
 - 950100xx
- Please substitute finish number needed in place of **xx**

Part #	Description
01	Ceramic Insert Hot/Cold
02	Finished Insert Holder
03	Handle Screw
04	Washer
05	Cross Handle
06	Handle Stem
07	Bell Escutcheon
08	Rubber O-Ring
10	Escutcheon
11	Flat Rubber Washer
12	Metal Ring & Rubber Washer
14	Brass Hex Nut
15	Valve Body – Ecobrass
16	1/2" Washer
17	1/2" Adapter – Ecobrass
19	Flexible Hose F-F - H & C
20	Top Knob
21	Finished Washer
22	Sealing Screw
23	Royale Spout – 8 1/4"
24	Aerator Washer
25	Aerator Filter
26	Aerator Cover
27	Spout O-Ring
28	Central Body – Ecobrass
29	Deck Escutcheon
30	Threaded Stem
35	3/4" Washer
36	T-Assembly – Ecobrass
37	Rubber O-Ring
38	Brass Nut
85	1/2 Turn Ceramic Cartridge
91	Royale Finished Ceramic Insert – Hot/Cold



Herbeau[®]
L'Art du Sanitaire depuis 1857

3021 - 'Royale' Three Hole Kitchen Mixer



Hole Drilling = 1 1/4"

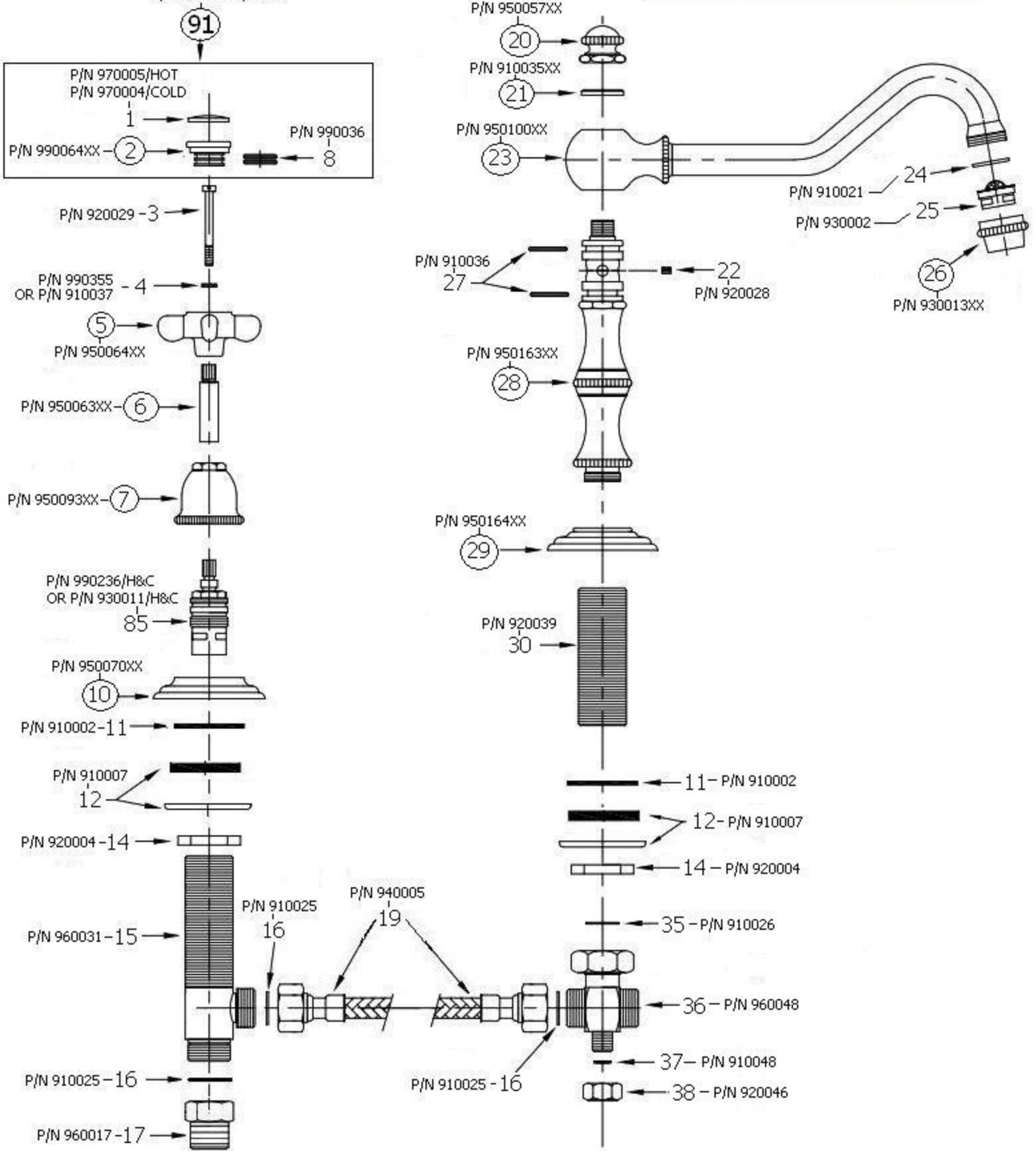
3021 - 'Royale' Three Hole Kitchen Mixer

P/N 950161XX/HOT
P/N 950162XX/COLD

*P/N = PART NUMBER

*990236 CARTRIDGES FOR FAUCETS MADE AFTER 2009.

*930011 CARTRIDGE GOOD FOR ALL YEARS



○ = FINISHED PARTS

XX = TWO DIGIT FINISH CODE