



Herbeau®
L'Art du Sanitaire depuis 1857

Technical Support

PDF Document

Email: support@herbeau.com

Herbeau Creations of America

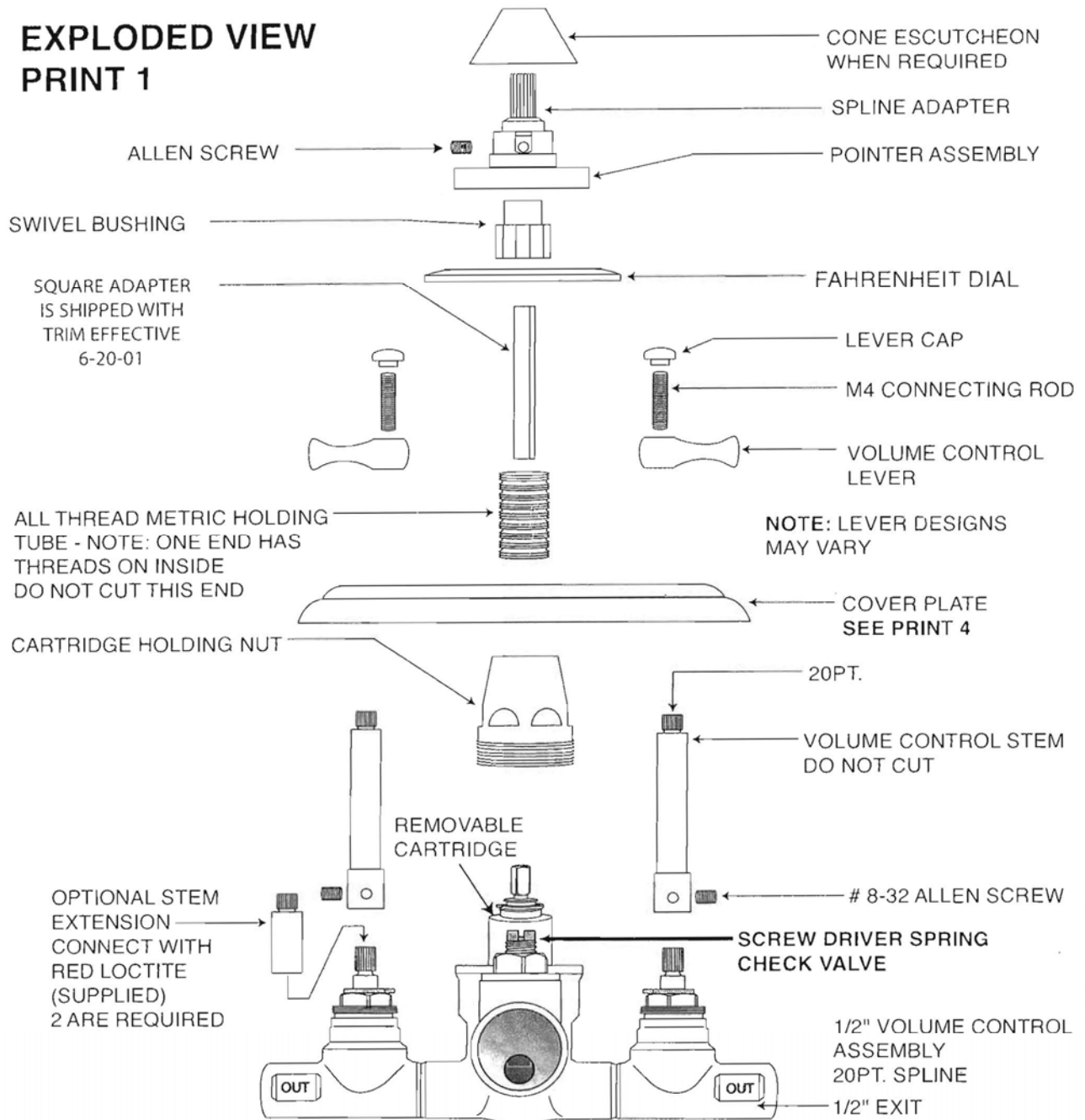
3600 Westview Dr., Naples, FL 34104

Phone 239.417.5368, Fax 239.417.8951, Toll-free 800.547.1608, Fax 800.547.0084, www.Herbeau.com

Installation Instructions for 1/2" Thermostatic Valve 2249-R, 2839-R, 3039-R and 3639-R. Note: Handles in drawing are samples only.

UNIVERSAL
1/2" FULL-FLOW WITH DUAL EXITS
 EXPLODED VIEW
 THERMOSTATIC VALVE

EXPLODED VIEW
PRINT 1



NO HEAT

THERMO VALVE BODY

NO TORCH

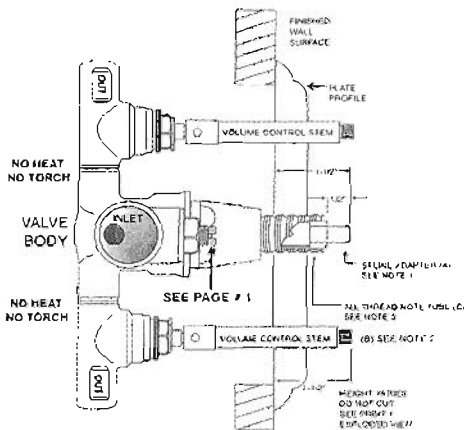
NEW 1/2" FULL FLOW THERMOSTATIC INSTALLATION INSTRUCTIONS

- STEP 1** Read the entire booklet first. Verify you have the 5 required installation prints.
- STEP 2** Connect the hot water to the side with red mark (+) and the cold water to the side with the blue mark (-). SEE CAUTIONS 1-2-3. Inlets are 3/4" NPT (SEE PRINT # 3)
- STEP 3** The depth of the valve should be installed using print # 2. Valve is shipped with maximum extension.
- STEP 4** Connect the exit(s) required to 1/2" NPT copper pipe. (SEE PRINT # 3)
Inlet shut-off valves are screwdriver spring check valves. The volume controls are 1/4 turn ceramic disk cartridges. Any debris in the cartridges may allow exits to drip. If you only need (1) exit, properly plug the 2nd exit.
DO NOT USE HEAT OR TORCH.
- STEP 5** Open both screw driver spring check valve inlet ports and pressure test all connections with water. Check for flow and leaks before closing the walls.
- STEP 6** Be sure the hot water heater is connected, clean and operational. Before you calibrate the cartridge, set the hot water to approximately 130° - 140° Fahrenheit. **If there is no hot water, you cannot test the system for proper performance.**
- STEP 7** The center of the valve is where the thermostatic cartridge is located. The cartridge only controls the mixed water temperature and must be "calibrated" to protect the end user while bathing. Calibration is simple but will take 5 to 7 additional minutes to set the mixed water temperatures to hot and cold limits. You control the temperature range of mixed water through calibration.
- Rotate the square (or spline adapter A) tube located on the thermo cartridge (SEE PRINT # 2) all the way to the right (clockwise) and you have the maximum cold water. Reverse (counter-clockwise) and you have the maximum incoming hot water. The set point is up to you. Feel the mixed water at the exit. Let water run for 2 or 3 minutes to confirm comfort level. Install the cover plate. Dial and pointer (SEE PRINT # 1) The dial represents a numerical location i.e. 80 where you will place the red pointer to remind you the bather of comfort temperature location.
- STEP 8** HIGH TEMP LIMIT SET POINT TRIM! The combined trim (The Dial Pointer Assembly) has a built-in stop and a manual override which limits the distance the handle will be allowed to turn in the hot direction. If you have calibrated the valve correctly, this CAN prevent children, elderly, and handicapped people from the danger of excessive hot water.
- STEP 9** You are now ready to enjoy your new Eurotherm system.

**PROFILE VIEW
PRINT 2**

THERMOSTATIC VALVE

PROFILE VIEW OF INSTALLED ROUGH VALVE ONLY
1/2" FULL FLOW VALVE AVAILABLE WITH SINGLE OR DUAL EXITS
SEE PRINT 4 ROUGH VALVE INSTALLATION PROCEDURE

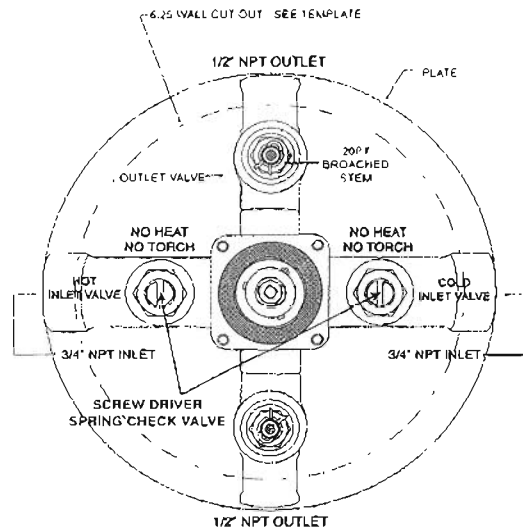


- INSTALLER NOTES - THIS VALVE MUST BE INSTALLED AS SHOWN ABOVE**
- (1) FROM THE FINISHED WALL TO THE END OF THE SPLINE ADAPTER (A) ALLOW 1 1/2" PART SHOULD NOT BE CUT - EXTENSIONS ARE AVAILABLE THIS SQUARE TUBE IS SHIPPED WITH THE TRIM
 - (2) VOLUME CONTROL STEM (B) CANNOT BE CUT - WE HAVE EXTENSIONS IF VALVE BURIED TOO DEEP
 - (3) THIS IS A SPECIAL ALL-THREAD METRIC TUBE CAUTION ONLY ONE END CAN BE CUT CUT BETWEEN THREADS ONLY THIS TUBE IS SHIPPED WITH THE TRIM.

**FULL FACE
PRINT 3**

THERMOSTATIC VALVE

1/2" FULL FLOW WITH DUAL EXITS

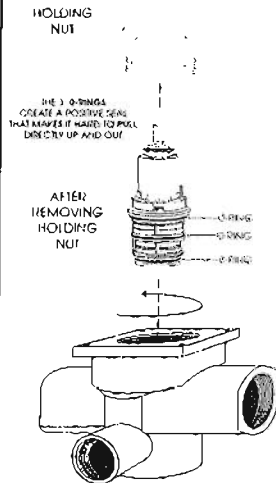


NOT A TEMPLATE DO NOT SCALE DRAWING

NO HEAT NO TORCH FACTORY TESTED AND SEALED

**PRINT
5**

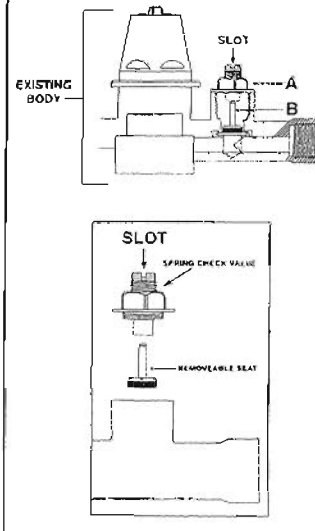
**THERMOSTATIC 1/2" CARTRIDGE
REMOVABLE FROM THE TOP**



To remove cartridge from body: Rotate cartridge counter clockwise.
To re-set: (Re-seal - Push straight into body and secure with holding nut)

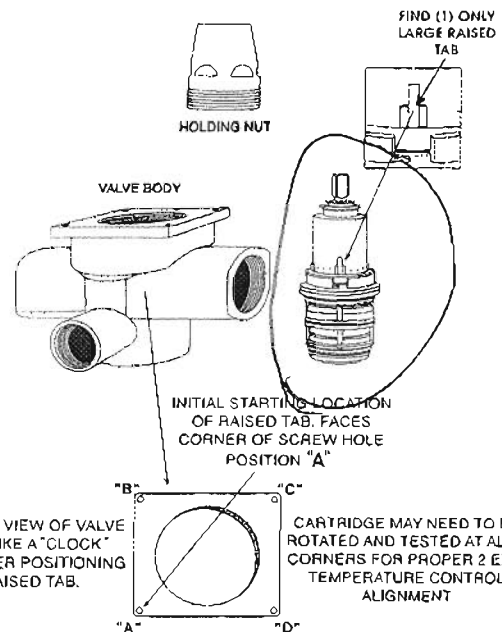
**PRINT
7**

SPRING CHECK VALVE



**PRINT
6**

**NEW THERMOSTATIC 1/2" CARTRIDGE EFFECTIVE 6-15-01
INSTALLATION AND PROPER ALIGNMENT OF CARTRIDGE
FOR 2 EXIT BALANCED TEMPERATURE CONTROL**

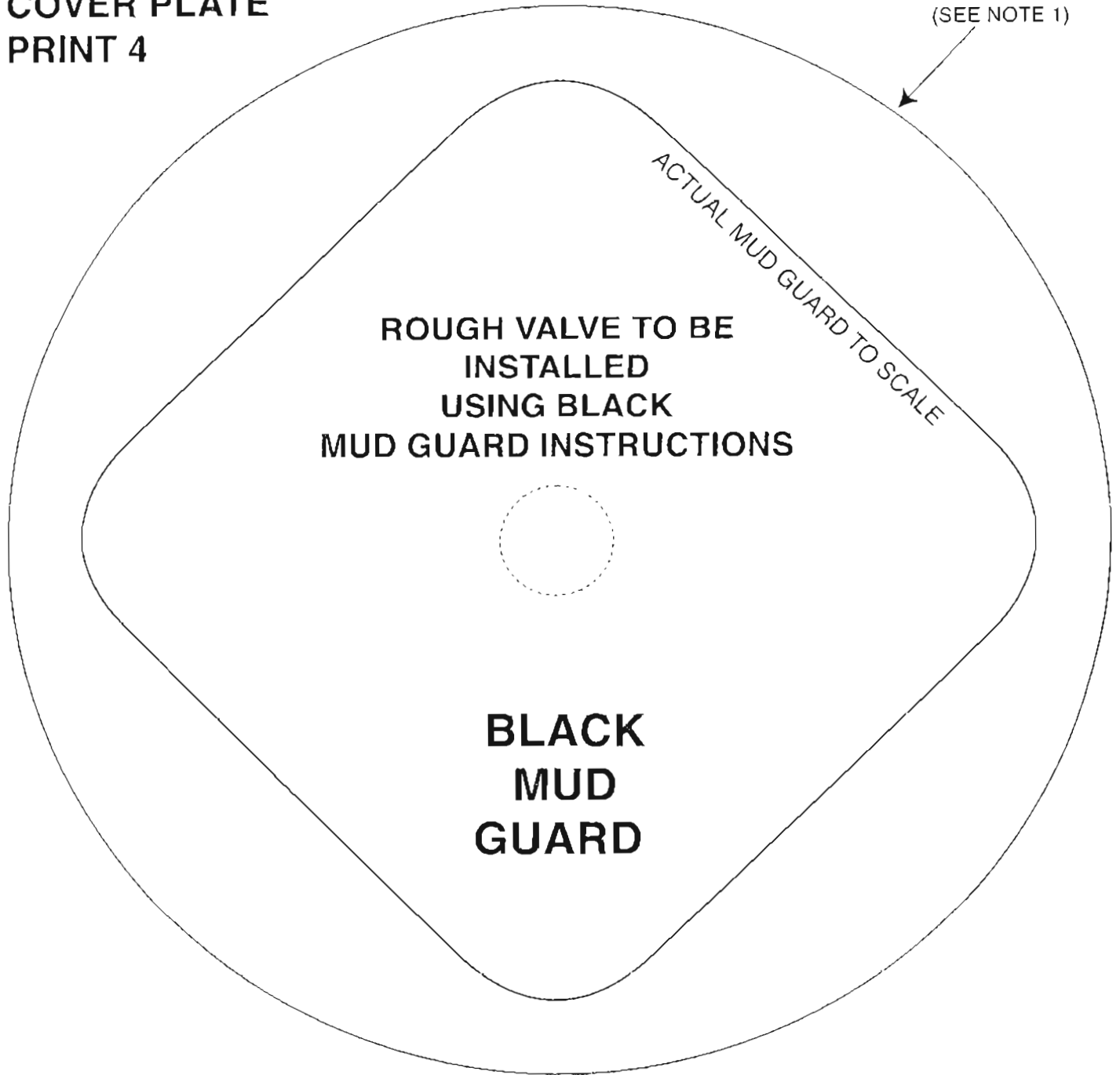


THERMOSTATIC VALVE
-FULL SCALE (1:1) CUTOUT TEMPLATE

FOR 1/2" FULL FLOW SYSTEMS

COVER PLATE
PRINT 4

PLATE
(SEE NOTE 1)



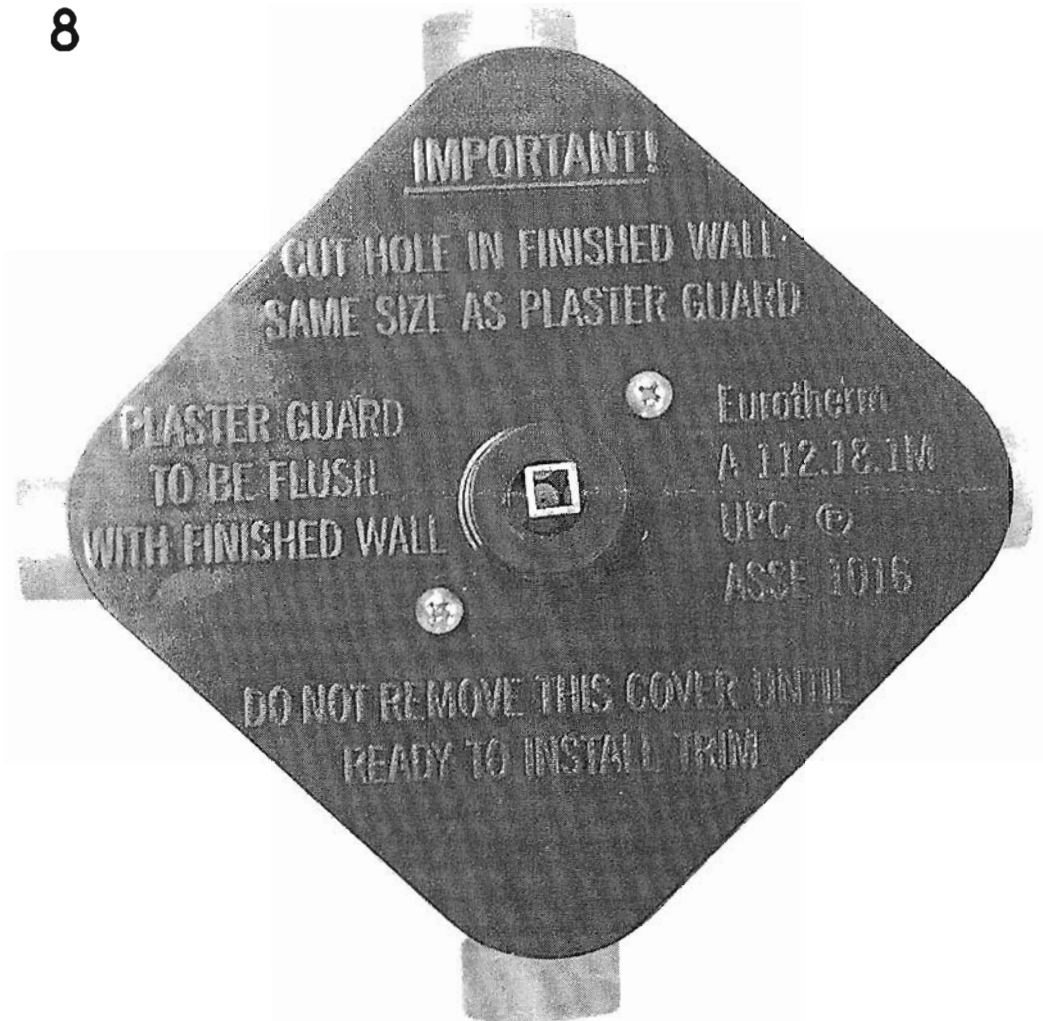
NOTES:

- 1. THE SOLID LINE REPRESENTS THE ACTUAL OUTLINE OF THE TRIM PLATE.
- 2. FOLLOW INSTRUCTIONS ON MUD GUARD FOR CUT OUTS AND INSTALLATION DEPTH.

Eurotherm Mud Guard

PRINT

8



GENERAL THERMOSTATIC INFORMATION FOR HOME OWNER

Please read the complete Thermostatic instructions and cautions contained in this booklet before attempting to install the Thermostatic Valve System.

Please be sure the Homeowner is provided the booklet for future reference for regular maintenance.

FEATURES:

- 1/2" systems come with 1/4 turn ceramic disc cartridges volume controls. Service shut-off valves are screwdriver spring check valves. Other sizes may have **optional shut-offs**, ask dealer for details.
- The 1/2" full-flow Thermostatic uses a parafin wax sensitivity cartridge.
- The 1/2" cartridge constantly monitors temperature and re-adjusts within 2° Fahrenheit of set temperature when supply pressure fluctuates, re-adjustment occurs in less than 2 seconds.
- The Eurotherm brand of Thermostatic valves have been in use worldwide for over fifty years.
- Complete serviceability from front of all units.
- Sizes vary from 1/2" - 3/4" - 1", 1-1/4", 1-1/2", and 2" for residential use.
- All other units are Bi-Metal Strip with Built-in Check Valves in the cartridge.
- Extension kits are available through your dealer at an extra charge.
- The Bi-Metallic cartridge delivers the highest flow rate in the industry today.
- The Bi-Metallic cartridge has the fastest response time plus + (or) minus -1 second, and 1° Fahrenheit when fluctuation in supply pressure occurs.
- Keep in mind that the distance the shower head or other exit is from the valve will depend on how fast you feel the instantaneous correction in the temperature.
- Uniform dials and push-button over-rides are interchangeable on all sizes of valves.
- 1/2" and 3/4" size valves come with dual exits as a standard feature. You may decide to plug one exit if you don't need both.

INSTALLATION CAUTIONS!

1. State of the art CNC Machining and 1/4 turn ceramic disc cartridges mean precision made product. **NO HEAT, NO TORCH ...** Shall be applied to the valve assembly.
2. Install adapters at each port, seal the joint, and then run the required copper lengths to the in-coming water. Solder the copper connection a minimum of 8" away from valve body.
3. Use approved thread sealers at all joints. **DO NOT USE PLUMBERS PUTTY, USE OF ANY CAUSTIC MATERIAL MAY HARM THE FINISH AND OR INTERFERE WITH PROPER FUNCTION OF THE CARTRIDGE.**
4. Prior to installing the thermostatic cartridge, flush all water lines to free up all solder, sand, silt, and debris that have loosened up from the installation process. The lines should be flushed long enough to remove any sediment that may come from any new additional installation such as a water heater.
5. Failure to flush all water lines properly may damage internal parts. An In-Line water filter is recommended to remove harmful sediment.
6. Inlet screwdriver spring check valves are provided with the 1/2" full-flow system. All other Eurotherm Thermostatic valves that come equipped with the Bi-Metallic strip cartridge have built-in check valves to protect cross-connection.
7. All valves that are not tooled with NPT connectors come with conversion adapters. (Metric and NPT)
8. For proper flow rates and multiple exit installations check with your authorized dealer for installation assistance. When installing body sprays with 1/2" systems (Custom or System 30), no more than three sprays should be plumbed out of the top outlet for maximum flow in conjunction with a pressure balancing loop.
9. Remember water pressure comes from your local water supplier and can be measured at the source on the street.
10. Pressure or water velocity is not a function of the valve.
11. The water meter that is supplied for your home should be 25% larger than the water line supply on your recirculation loop for maximum flow rates from the valve.
12. Do not attempt installation of the product if you do not understand these instructions.
13. **Qualified plumbers should be used for all installation procedures.**

**FAILURE TO FOLLOW INSTRUCTIONS MAY CAUSE DAMAGE
OR IMPROPER OPERATION AND VOID THE WARRANTY.**

Please read the complete Thermostatic instructions and cautions contained in this booklet before attempting to install the Thermostatic Valve System.

1. Flush all rough-in piping thoroughly to remove sediment, flux and other debris.
2. Hot and cold inlets are clearly marked. **DO NOT REVERSE CONNECTIONS, THE UNIT WILL NOT WORK CORRECTLY.**
3. **DO NOT USE DIRECT HEAT, OR ANY TORCH ON 1/2" ROUGH VALVES.**
4. If unit comes with a black or gray plastic outer ring -- read directions and be sure you keep above ring installed even after the trim is installed.
5. Minimum and maximum finished wall tolerances are clearly marked. (SEE EXPLODED VIEW OF VALVE)
6. It is extremely important that the rough mixing chamber be free of all debris before installation of the thermostatic cartridge. Read all instructions on boxes, valves and cartridges.
7. Under no circumstances should the thermostat cartridge be dismantled. Doing so will void any warranty and generally make the cartridge inoperable.

MAINTENANCE

The Bi-Metallic strip cartridge has two filter screens and a simple cleaning with a toothbrush will remove surface debris.

Soaking the cartridge in a 50/50 solution of clear household vinegar and water will remove lime scale, and lime deposits caused from your water.

Regular cleaning each year will extend the life of the cartridge. Never use a screwdriver on any thermostatic cartridge. **Never take a thermostatic cartridge apart as you will damage this precise instrument.** Call your dealer or the factory for answers to your questions.

Installation of 3027/3027P Royale faucets

Installation of these faucets must be performed by an experienced, licensed plumber for proper installation and warranty

Installation of these faucets in a marine/outdoor environment will void the warranty

Tools needed:

Power drill

Measuring tape or ruler

Pencil

Pliers

Adjustable wrench

Clean rags

Plumber's grease

Bucket

Faucet prep and installation:

1. Drill out two holes in the counter with a diameter of 1 3/4" each, spaced 8" apart, center of each hole to center of each hole for hot and cold valve installation.
2. Drill out 1 1/4" hole in counter for hand spray. (Bear in mind that hand spray hose is approximately 48" long for proper distance of hand spray to faucet.)
3. Ensure there are appropriate 3/8" hot and cold male connections with shut-off valves underneath counter for connecting to faucet's 3/8" x 12" hot and cold braided supply lines.
4. To avoid possibly damaging your faucet and voiding your warranty, be sure to flush out hot and cold supply lines into bucket before faucet hook-up to ensure no debris is flushed into faucet. If debris is flushed into faucet, this can cause a number of problems: No water flow from spout, no water flow from hand spray, clogged/damaged diverter or clogged/damaged cartridges.
5. To prepare faucet for installation, unthread #34 hot side hex nut counter-clockwise from hot side #32 elbow and #34 cold side hex nut counter-clockwise from cold side #32 elbow. (Be careful not to lose #33 washers as they may fall out after unthreading hex nuts.)
6. Unthread #32, 90 degree elbows by unthreading counter-clockwise.
7. Thread #31 round smooth brass connectors up counter-clockwise to expose #28 black rubber o-rings.
8. Carefully slide #28 rubber o-rings off of #27 threaded supply lines and set aside for now.
9. Unthread #31 round smooth brass connectors counter-clockwise to remove and set aside for now.
10. Unthread #30 hex mounting nuts counter-clockwise and set aside for now.
11. Pull off #29 black or brass horseshoe mounting brackets with washers and set aside.
12. Unthread the hot and cold diverter supply line hoses counter-clockwise from #36 T-connector.
13. Slip all supply line hoses and threaded supply line rods through pre-drilled mounting holes in counter, being careful not to damage any lines or rods.
14. Center faucet valves on counter holes with #23 rubber washers placed underneath valves and slide mounting brackets back up onto threaded supply lines. Thread

- #30 nuts clockwise back onto #27 threaded supply lines and tighten down so faucet is secure. Ensure #10 main body is parallel in line with both hot and cold bodies and adjust parallel, then tighten nuts clockwise until snug.
15. Thread #31 round brass connectors clockwise up past the o-ring notches on #27 threaded supply lines.
 16. Slip #28 rubber o-rings into their notches on #27 threaded supply lines.
 17. Thread #32 elbows clockwise onto #27 rods up to where #28 o-rings sit. At this point, tighten #31 round brass connectors and #32 elbows together so #28 o-rings are securely pinched between both connectors. #32 elbow's male threads must be pointed toward #34 nuts and at a 90 degree angle to the #34 T-connector for proper alignment.
 18. Ensuring #33 washers are in place between #32 and #34, position #34 hex nuts carefully over #32 elbows and thread clockwise until snug.
 19. Thread #25 hot and cold inlet supply lines clockwise back onto #36 T-connector until snug, ensuring #26 washers are in place.
 20. Thread #24 hot and cold inlet supply lines clockwise onto hot and cold water supplies.

Hand spray installation:

21. To install hand spray, attach #50 brass threaded stem underneath counter by threading #51 nut clockwise over #50 stem approximately 1”.
22. Slip #52 rubber washer and metal trim over top of #50 stem, ensuring cup side of metal washer is facing up.
23. Lay #53' rubber washer under #53 finished hand spray escutcheon and place over hand spray hole in counter.
24. Thread #50 stem up beneath counter into #53 finished hand spray escutcheon until #50 stem is secure.
25. Tighten assembly by threading #51 nut clockwise until escutcheon assembly is secure.
26. Ensure there is a #35 washer in the end of the #48 hand spray hose before attaching. Take one end of the #48 hand spray hose and feed it up through the hand spray threaded stem and escutcheon and thread clockwise onto bottom of hand spray elbow until snug. Set hand spray into escutcheon and ensure it sits in the escutcheon securely.
27. Attach other end of hand spray hose to #46 backflow preventer if used on faucet and thread the completed hose assembly onto the bottom of the hand spray until snug. Ensure there is a #35 washer between the hose and the #46 backflow connector and #91 diverter block. (New style lever hand sprays incorporate back flow preventers inside of them so there will be no need for a hose mounted backflow preventer on these.)

Faucet and hand spray test:

28. Ensure hot and cold valves on faucet are in the off position.
29. Turn the hot and cold water supply lines on slowly and ensure there are no leaks anywhere on or around faucet or hand spray.

30. Turn the hot and cold faucet handles to on position and ensure a clean, steady flow of water from the faucet spout.
31. Activate hand spray by either pushing hand spray button or lever, depending on model and ensure a clean, steady flow of water from the hand spray nozzle and water flow from the faucet spout stops.
32. Release button or lever on hand spray and ensure water flow at the faucet spout resumes.
33. Shut faucet hot and cold handles off. Faucet is now successfully installed.

Finish and care instructions for your faucets can be found at the following link:

<http://www.herbeau.com/downloads/CleaningAll.pdf>

Specification sheets for the 3027/3327 can be found at the following links:

<http://www.herbeau.com/Specs/3027.pdf>

<http://www.herbeau.com/Specs/3327.pdf>



Herbeau[®]
L'Art du Sanitaire depuis 1857

**Installation, calibration and maintenance instructions for
3039, 2249 and 3639 1/2" thermostatic valve and trim**

Note:

**Thermostat may not work with an in-line water heater
unless there is sufficient pressure and flow rate within the
hot water system!!**

**Note: Lines must be flushed prior to installation of
valve/cartridges for warranty coverage!!**

Tools required:

Adjustable wrench
Large flat head screwdriver
Medium flat head screwdriver
Medium Phillips Screwdriver
2.5mm or 3mm Allen key
Caulk or silicon

Information:

Do not use any heat or torch on the valve or within close proximity to the valve. This may cause damage to the thermostatic cartridge.

Note:

The valve casing comes with a square plastic plate attached to front of valve with two Phillips screws. When ready to install rough, remove plate and set aside. Do "not" discard as this is the mud guard plate.



Herbeau®
L'Art du Sanitaire depuis 1857



Instructions:

1. First, remove all valve rough parts from the 3039-R, 2249-R or 3639-R box and ensure all parts are accounted for.
2. Follow the instructions on the black plastic mud guard for cut-outs and installation depth.



Herbeau®

L'Art du Sanitaire depuis 1857



3. Install the #1 rough into the wall and secure to rough ½” piping using the ½” male fittings. Ensure hot water is attached to left side with red tab and cold water to right side with blue tab.
4. Install the peripherals (i.e. spout, shower head, body sprays) to the casing #1, ½” exits.
5. Remove the #2 cartridge holding nut, thermostatic cartridge and ¼ turn check valve cartridges from rough. (Remove #1 thermostatic cartridge by pressing in and turning counter-clockwise.) Run hot and cold water through rough to flush out any remaining debris.
6. Re-install thermostatic cartridge (shown below) and check valve cartridges.



Herbeau Creations of America

3600 Westview Drive, Naples, FL 34104

Phone (239) 417 5368, (800) 547 1608, Fax (800) 547 0084

E-mail: support@herbeau.com, WWW: <http://www.herbeau.com>



Herbeau®

L'Art du Sanitaire depuis 1857

7. Open both screw driver spring check valve inlet ports and turn on the water and check the unit and peripherals for leaks.
8. Shut off the water at the main connection and empty the peripherals of any residual water.
9. Install #4 hollow square tube onto cartridge nipple as shown below.



10. Thread #3 round hollow tube into cartridge holding nut as shown below. The #3 and #4 tubes can be trimmed down to accommodate different wall depths. (An 8", #3 and #4 extension kit part #990082 available for extra deep walls.)





Herbeau®

L'Art du Sanitaire depuis 1857

11. Install the plastic mud guard on the front of the casing per instructions on mud guard.



12. Close the wall

13. Remove all parts from the trim kit box 3039XX-T, 2249XX-T or 3639XX-T and ensure they are accounted for. (3039XX-T shown top of next page.)



Herbeau®

L'Art du Sanitaire depuis 1857



14. Install the temperature indicator plate #11, onto #7 wall plate. (Wall plate #7 is installed with “Herbeau” at the top and two tab holes at the 12 and 6 o’clock positions. The #11 plate is installed onto #7 with 85° mark at approximately 12 o’clock position.)

15. #5 scold stop plate is installed onto #11 and #7 plate with two round tabs as shown top of next page with the scold stop ¼ circle at the bottom left quadrant.

Herbeau Creations of America

3600 Westview Drive, Naples, FL 34104

Phone (239) 417 5368, (800) 547 1608, Fax (800) 547 0084

E-mail: support@herbeau.com, WWW: <http://www.herbeau.com>



Herbeau®

L'Art du Sanitaire depuis 1857



16. Thread the #12 swivel bushing onto #9 threaded extension tube and tighten as shown top of next page.



Herbeau®

L'Art du Sanitaire depuis 1857



17. Be sure the hot water heater is connected, clean and operational. Before you calibrate, set the hot water to approximately 130°- 140° Fahrenheit. **If there is no hot water, you cannot test the system for proper performance.**
18. Calibrate the thermostatic cartridge using the next seven steps:
19. Turn on the water.
20. Turn the square tube clockwise until it stops. Verify you have maximum cold water.
21. Turn the square tube counter-clockwise until it stops. Verify you have maximum hot water.
22. Turn the square tube clockwise again until it stops. (It may vary between 1 ¼ - 2 revolutions.)
23. Take the temperature of the water at one of the peripherals.
24. If the temperature of the water at the peripheral is less than 100 degrees F, turn the square tube counter-clockwise a quarter turn. Wait 60 seconds for the temperature to stabilize and take the temperature again. Continue until you reach 100 degrees F.
25. Shut off the water.
26. Install the pointer assembly #6 onto #12 swivel bushing with the red button at the middle of the 105 degree mark and tighten the three set screws on #6 pointer assembly.

Herbeau Creations of America

3600 Westview Drive, Naples, FL 34104

Phone (239) 417 5368, (800) 547 1608, Fax (800) 547 0084

E-mail: support@herbeau.com, WWW: <http://www.herbeau.com>



Herbeau®

L'Art du Sanitaire depuis 1857



27. For 3039XX-T and 3639XX-T, slip the bell housing #15 over #6 pointer assembly.
28. For 2249XX-T, the #16 handle escutcheon snaps over #6 and handle #17 fits tightly over plastic insert on #6. (To remove the knob for maintenance, pull firmly and evenly under the knob to pop it off of the plastic insert.)
29. For 3039XX-T and 3639XX-T, slip the #16 handle over #15 stem.
30. For 3039XX-T, set #17 washer into the top of #16 handle.
31. For 3039XX-T and 3639XX-T, thread the #18 screw through #16 handle and into #15 bell housing until tight.
32. For 3039XX-T and 3639XX-T, install ceramic insert assembly into the top of #16 handle.
33. For all trim kits, ensure that the red pointer tab does not go past the 105 degree mark without depressing the red button

Herbeau Creations of America

3600 Westview Drive, Naples, FL 34104

Phone (239) 417 5368, (800) 547 1608, Fax (800) 547 0084

E-mail: support@herbeau.com, WWW: <http://www.herbeau.com>



Herbeau®
L'Art du Sanitaire depuis 1857



34. Turn the water on again and double check settings. Installation and calibration are complete.



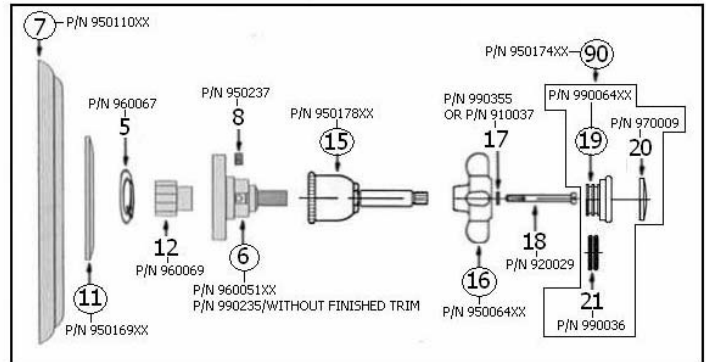
Herbeau®

L'Art du Sanitaire depuis 1857

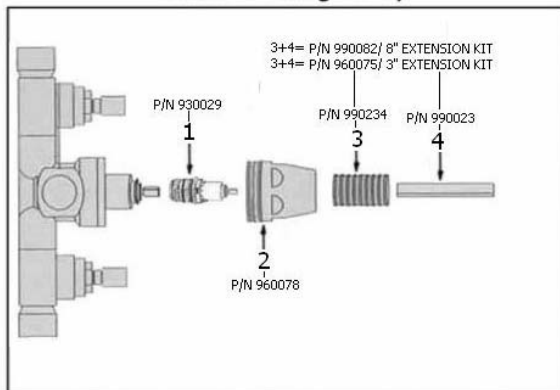
3039 - 'Royale' 1/2" Thermostatic Valve

*P/N = PART NUMBER

3039(Finish)-T Trim only



3039-R Rough only



○ = FINISHED PARTS
XX = TWO DIGIT FINISH CODE

Copyright©2017 Herbeau Creations. All rights reserved. All product and specifications are subject to change without notice. Herbeau Creations is not responsible for typographical and/or dimensional errors. Typographical errors are subject to correction.



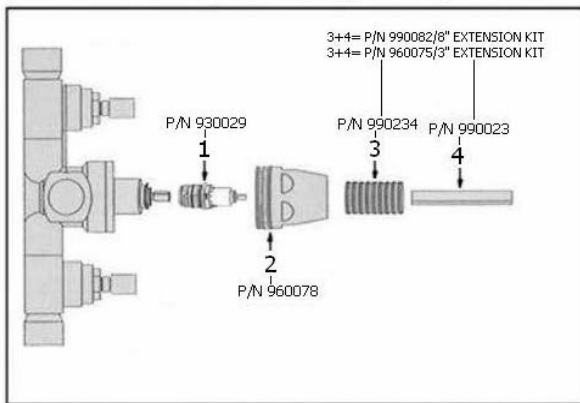
Herbeau®

L'Art du Sanitaire depuis 1857

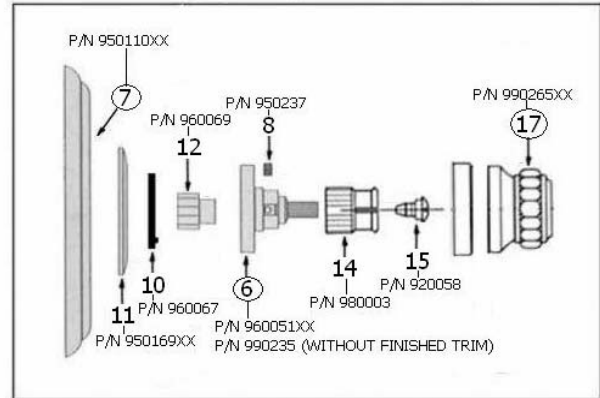
2249 - 'Pompadour' 1/2" Thermostatic Valve

*P/N = PART NUMBER

2249-R Rough only



2249(Finish)-T Trim only



○ = FINISHED PARTS
XX = TWO DIGIT FINISH CODE

Copyright©2017 Herbeau Creations. All rights reserved. All product and specifications are subject to change without notice. Herbeau Creations is not responsible for typographical and/or dimensional errors. Typographical errors are subject to correction.

Herbeau Creations of America

3600 Westview Drive, Naples, FL 34104

Phone (239) 417 5368, (800) 547 1608, Fax (800) 547 0084

E-mail: support@herbeau.com, WWW: <http://www.herbeau.com>



Herbeau®

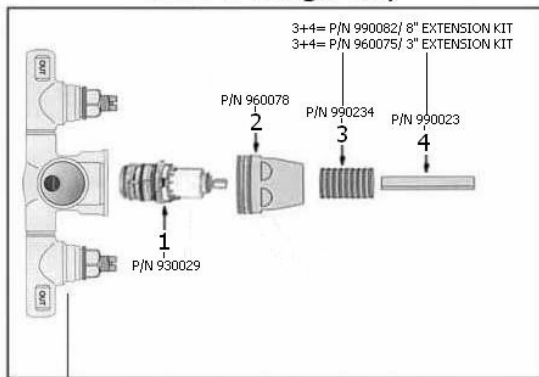
L'Art du Sanitaire depuis 1857

3639 - 'Monarque' 1/2" Thermostatic Valve

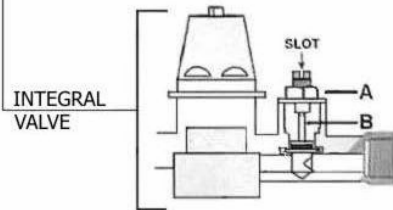
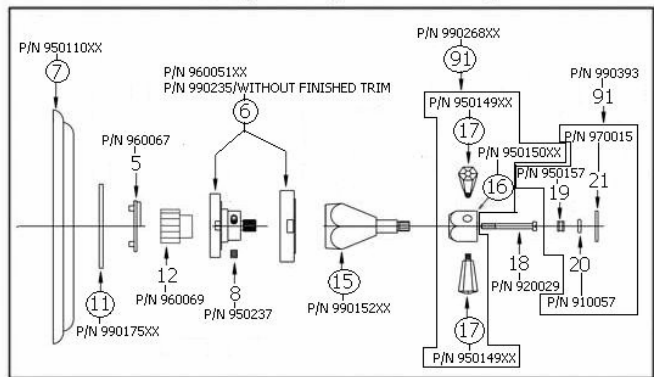
*P/N = PART NUMBER

EXPLODED VIEW

3639-R Rough only



3639(Finish)-T Trim only



○ = FINISHED PARTS
XX = TWO DIGIT FINISH CODE

Copyright©2017 Herbeau Creations. All rights reserved. All product and specifications are subject to change without notice. Herbeau Creations is not responsible for typographical and/or dimensional errors. Typographical errors are subject to correction.



Herbeau®

L'Art du Sanitaire depuis 1857

Maintenance

1. **Cartridge cleaning:** If the cartridge is installed prior to flushing the lines you may inadvertently clog the cartridge. A dirty cartridge may lead to a reduction in the flow rate. It is then necessary to clean it with a brush after removing the #2 cartridge nut and #1 cartridge.
2. **Cleaning the cartridge:** Again, if the cartridge is installed prior to flushing the lines, you may inadvertently clog the cartridge. It will be necessary to remove the #2 cartridge nut and #1 cartridge from the body casing #1. (**Never take the cartridge apart or you will void all warranties!!**) Simply soak the entire cartridge in a 75/25 vinegar and water solution for 1 to 3 hours and re-install the #1 cartridge and #2 cartridge nut. 90% of the time, the valve will then work normally.
3. **These systems must be regularly cleaned each year as necessary by a licensed professional plumber and cleaning documented!** This will extend the life of the cartridge and is necessary for any warranty claims.



4. **EMPTYING IN CASE OF FROST:** When the valve is exposed to freezing conditions, it is essential to empty it:



Herbeau®

L'Art du Sanitaire depuis 1857

- = Either by turning on a tap at the bottom of the outlet
- = Or by removing the cartridge and ¼ turn check valves.

Note:

Thermostat may not not work with an in line water heater unless there is sufficient pressure and flow within the hot water system!!

Revised 07/03/2014



Herbeau®
L'Art du Sanitaire depuis 1857

TROUBLESHOOTING

CALIBRATING THE 3039-3049 THERMOSTATIC VALVE

INFORMATION

Do not use any heat or torch on the valve or within close proximity to the valve. This may cause damage to the thermostatic cartridge.

INSTRUCTIONS

1. Turn on the water.
2. Turn the square tube clockwise until it stops.
3. Turn the square tube counter-clockwise until it stops.
4. Turn the square tube clockwise two full revolutions.
5. Take the temperature of the water at the spout.
6. If the temperature is less than 100°F, turn the square tube counter-clockwise a quarter turn. Wait 60 seconds for the temperature to stabilize, and take the temperature again. Continue until you reach 100°F.
7. Calibration is complete.

Herbeau Creations of America

Phone: (239) 417-5368 Toll Free: (800) 547-1608 Fax: (239) 417-8951 www.herbeau.com

BASIC TROUBLE SHOOTING OF THE 3/4" THERMOSTATIC CARTRIDGE.
DURING INSTALLATION OR IN TRANSIT, CERTAIN KEY ELEMENTS MAY BE AFFECTED.

#1

Remove washers.

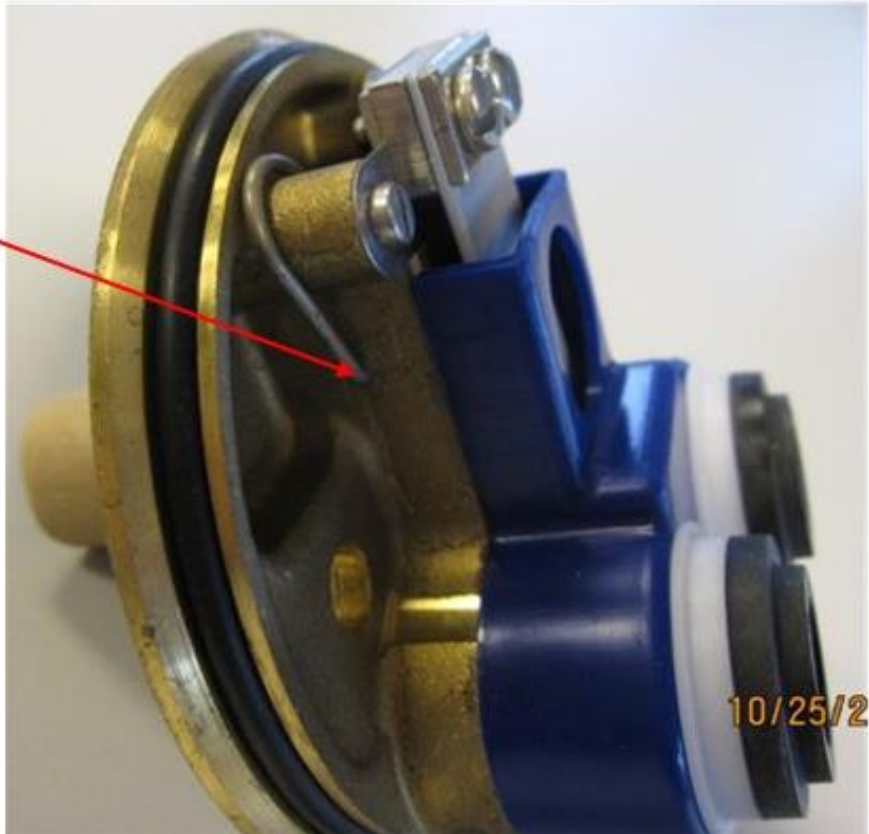
Verify check valves are operating properly (lightly push them in).
Check valves are located in the center.

Re-install washers & screen.

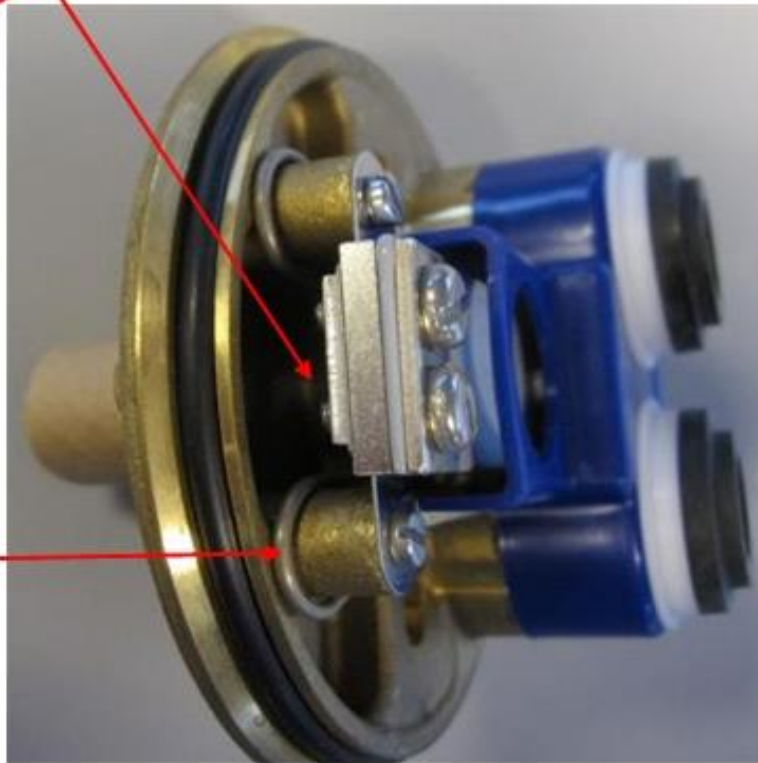


#2

Verify S/S tensioners are properly engaged to cover body on both sides.

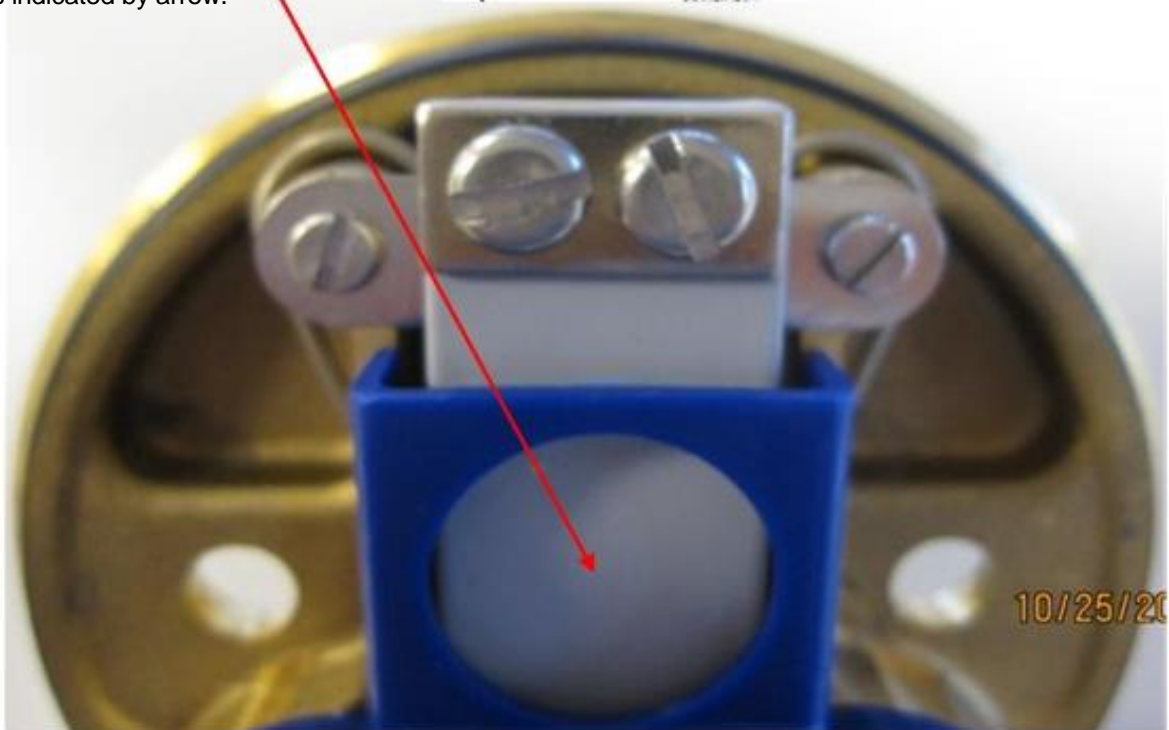


#3 Verify nothing is impeding the square cartridge stem from actuating the bi-metallic strip by turning the square cartridge stem.



#4 To break up any possible mineral build-up, use a flat head screw driver & slide tensioner across cartridge stand-off post.

#5 Turn square cartridge stem fully counter-clockwise, then, with a finger, push down on grey bi-metallic strip as indicated by arrow.



RE-INSTALL YOUR CARTRIDGE & TEST.
IF PROBLEM CONTINUES, CONTACT FACTORY.

**4102, 4110, 4116, 4121, 4131, 4207, 4208, 4209 and 4213
installation instructions**

**Installation of these faucets must be performed by an
experienced, licensed plumber for proper installation and
warranty**

**Installation of these faucets in a marine/outdoor environment
will void the warranty**

NOTE:

**WHEN REMOVING AND RE-INSTALLING BLACK PVC
DIVERter BLOCK, MAKE SURE THAT CONNECTIONS
TO THREADED SUPPLY LINE AND HAND SPRAY HOSE
ARE NOT REVERSED. IF THEY ARE, THERE WILL BE
NO WATER FLOW TO HAND SPRAY OR SPOUT!!!!**

Tools needed:

Power drill

Measuring tape or ruler

Pencil

Pliers

Adjustable wrench

Clean rags

Plumber's grease

Bucket

Faucet prep and installation:

1. Cut one 1 ¾" hole in counter for main faucet body.
2. Cut one 1 ¼" hole in counter for hand spray. (Keep in mind that hand spray hose is 48" in length for proper distancing from faucet body.)
3. Ensure there are proper hot and cold lines with 3/8" male fittings to connect to the hot and cold flexible female supply hoses.
4. Ensure there are hot and cold shut-off valves within reach of the faucet if possible for emergency shut-off and maintenance.
5. To avoid possible damage to your faucet and voiding your warranty, be sure to flush out the hot and cold supply lines into bucket before faucet hook-up. If debris is flushed into faucet, this can cause a number of problems: No water flow from spout, clogged spout aerator or clogged/damaged cartridges.

6. Remove hoses from diverter block by unthreading counter-clockwise. (Be careful not to lose the hose washers.)
7. Unthread diverter block by unthreading counter-clockwise from main threaded supply line.
8. Remove main threaded supply line rubber o-ring from groove.
9. Unthread threaded main supply line mounting hardware counter-clockwise and remove brass washer and mounting bracket if uses on faucet.
10. Carefully set faucet body with rubber washer underneath faucet escutcheon over 1 3/4" counter hole. (Be careful when placing main faucet threaded supply line through hole.)
11. Underneath counter, slip mounting bracket and rubber washer, if used, up onto main threaded supply line and thread brass mounting nut clockwise until mounting hardware and faucet are snug to counter.
12. Install threaded supply line rubber o-ring back into groove on threaded supply line.
13. For black plastic new style diverter block, thread diverter block with connection labeled 3/8 G clockwise onto threaded main supply line until snug and rubber o-ring is sealing female connection on top of diverter block.
14. Thread flexible supply line back onto male elbow on diverter block marked 1/2" G, ensuring washer is in place.
15. Thread hand spray hose clockwise onto male connection of backflow preventer and thread backflow preventer clockwise onto male connection on bottom of diverter block labeled M15 X 1. (Ensure hose and backflow preventer washers are in place before attaching.)
16. Thread hot and cold flexible supply line hoses clockwise onto hot and cold water supply lines until snug.

Hand spray install:

17. To install hand spray, start by threading #51 nut clockwise over #50 stem approximately 1".
18. Slip #52 rubber and metal trim over top of #51 nut on #50 stem, ensuring cup side of metal washer is facing up and rubber washer sits inside of metal cup.
19. Lay #53' rubber washer under #53 finished hand spray escutcheon clockwise until #50 stem top thread is just below top of escutcheon.
20. Thread the nut side of #50 stem up into #53 finished hand spray escutcheon clockwise until #50 stem top thread is just below top of escutcheon.

21. Tighten assembly by threading #51 nut clockwise until escutcheon assembly is secure.
22. Slip the hand spray hose up through #50 threaded stem and thread the hand spray end of the hand spray hose clockwise onto the hand spray elbow until snug. (Be sure to have hand spray hose washer installed in hose before attaching.)
23. Set hand spray into escutcheon and ensure it sits securely in the hand spray holder.

Faucet and hand spray test:

24. Ensure hot and cold valves or single lever on faucet is in the off position.
25. Turn the hot and cold water supply lines on slowly and ensure there are no leaks anywhere on or around faucet or hand spray.
26. Turn hot and cold water handles or single lever faucet handle to on position and ensure a clean, steady stream of water from the faucet spout.
27. Activate hand spray by either pushing the hand spray button or lever, depending on model and ensure a clean, steady stream of water from the hand spray nozzle and water flow from the spout stops.
28. Release button or lever on hand spray and ensure water at faucet spout resumes to full flow and water from the hand spray stops.
29. Shut off hot and cold handles or faucet lever handle. Faucet is now successfully installed.

YEARLY MAINTENANCE

We recommend that once a year, on the 4102, 4110, 4121 and 4131 faucets that the cartridge nut is removed once a year and the threads on the nut and body be cleaned and re-lubricated with Anti Seize or Plumbers grease. This will help ensure that the threads do not seize up due to calcium build-up.

Finish and care instructions for your faucets can be found at the following link:

<http://www.herbeau.com/downloads/CleaningAll.pdf>

Specification sheets for your faucets can be found at the following links:

<http://www.herbeau.com/Specs/4102.pdf>

<http://www.herbeau.com/Specs/4110.pdf>

<http://www.herbeau.com/Specs/4121.pdf>

<http://www.herbeau.com/Specs/4131.pdf>

<http://www.herbeau.com/Specs/4207.pdf>

<http://www.herbeau.com/Specs/4208.pdf>

<http://www.herbeau.com/Specs/4209.pdf>

4104 Installation instructions

Installation of this faucet must be performed by an experienced, licensed plumber for proper installation and warranty

Installation of this faucet in a marine/outdoor environment will void the warranty

Tools needed:

Power drill
Measuring tape or ruler
Pencil
Pliers
Adjustable wrench
Clean rags
Plumber's grease
Bucket

Faucet prep and installation:

1. Cut one 1 3/4" hole in counter for main faucet body.
2. Cut one 1 1/4" hole in counter for hand spray. (Keep in mind that hand spray hose is 48" in length for proper distancing from faucet body.)
3. Ensure there are proper hot and cold lines with 3/8" male fittings to connect to the hot and cold flexible 3/8" female supply hoses on faucet.
4. Ensure there are hot and cold shut-off valves within reach of the faucet if possible for emergency shut-off and maintenance.
5. To avoid possible damage to your faucet and voiding your warranty, be sure to flush out the hot and cold supply lines into bucket before faucet hook-up. If debris is flushed into faucet, this can cause a number of problems: No water flow from spout, clogged spout aerator, seized up diverter or clogged/damaged cartridge.
6. Remove faucet mounting plate #46 by unthreading #44 nuts counter-clockwise and then pull off #4 washers and #46 plate.
7. Set faucet body onto faucet hole in counter with #31 gasket installed between faucet escutcheon and counter. Make sure supply hoses and mounting rods are installed in faucet.
8. Re-install mounting plate by sliding mounting plate up over hoses and mounting rods. Put washers back onto rods and thread #44 mounting nuts on rods clockwise until faucet is mounted securely onto counter.

9. The #91 Estelle handle assembly can be re-positioned to four different positions by unthreading the #1, #2 and #3 handle top finial assembly and lifting the #91 handle assembly off of the top of the #86 cartridge stem. The handle can then be mounted back on top of the #86 cartridge stem at the 3, 6, 9 or 12 o'clock positions. When mounted at the desired position, thread #2 finial assembly back into the top of the #91 handle clockwise until snug.
10. Ensure hand spray hose and back flow preventer washers are in place. Thread #78 hand spray hose clockwise onto male connection of the #37 back flow preventer and thread back flow preventer onto male hand spray connector on bottom of faucet.
11. Thread hot and cold flexible line hoses clockwise onto hot and cold water supplies.

Hand spray install:

12. To install hand spray, start by threading #51 nut clockwise over #50 stem approximately 1".
13. Slip #52 rubber washer and metal trim over top of #51 hex nut on #50 stem, ensuring cup side of metal trim is facing up and rubber washer is set into top of metal trim cup.
14. Lay #53' rubber washer under #53 finished hand spray escutcheon and place over hand spray hole in counter.
15. Thread #50 stem up into #53 escutcheon until #50 stem is just below top of escutcheon.
16. Tighten assembly by threading #51 nut clockwise until escutcheon assembly is secure to counter.
17. Slip #78 hand spray hose up through #50 threaded stem and thread the hand spray end of the hose clockwise onto the hand spray elbow. (Be sure to have hand spray hose washers installed in hose before attaching.)
18. Set hand spray into escutcheon and ensure it sits in the holder securely.

Faucet hand spray test:

19. Ensure lever handle on faucet is in the off position.

20. Remove the spout and hand spray aerator filter to allow any particulates to be flushed straight out of the spout and hand spray. This is done by unscrewing the spout aerator cover which has two flat sides so a wrench can be attached. To remove hand spray aerator unscrew the end cap.
21. Turn the hot and cold water supply lines on slowly and ensure there are no leaks anywhere on or around faucet or hand spray.
22. Turn lever handle on faucet to on position and ensure a clean, steady stream of water from the faucet spout.
23. Activate hand spray by either pushing the hand spray button or lever, depending on model and ensure a clean, steady stream of water from the hand spray nozzle and water flow from the spout stops.
24. Release button or lever on hand spray and ensure water at faucet spout goes back to full flow and water flow from the hand spray stops.
25. Shut off faucet lever handle. Re-attach spout and hand spray aerator filter and cover. Faucet is now successfully installed.

Finish and care instructions for your faucet can be found at the following link:

<http://www.herbeau.com/downloads/CleaningAll.pdf>

Specification sheets for your faucet can be found at the following link:

<http://www.herbeau.com/Specs/4104.pdf>

4108 and 4109 installation instructions
Installation of these faucets must be performed by an
experienced, licensed plumber for proper installation and
warranty
Installation of these faucets in a marine/outdoor environment
will void the warranty

Tools needed:

Power drill
Measuring tape or ruler
Pencil
Pliers
Adjustable wrench
Clean rags
Plumber's grease
Bucket

Faucet prep and installation:

1. Determine where on the wall you are going to mount the faucet.
2. If mounting the faucet on the wall or the sink wall, take care not to mount too low as this can cause abnormal stress on the hand spray hose if the hose is pulled up at an extreme angle repetitively. The hose may not be covered under warranty if it's determined the faucet has been mounted at an extremely low angle, causing undue stress on the hose and causing it to fracture or split and unravel.
3. Cut one 1 ¼" – 1 ½" hole in the wall to allow the two 3/8" x 3/8" flexible braided supply lines to fit through.
4. Ensure there are proper hot and cold supply lines with 3/8" male fittings.
5. Ensure there are hot and cold shut-off valves within reach of the faucet for emergency shut-off and maintenance.
6. To avoid possible damage to your faucet and voiding your warranty, be sure to flush out the hot and cold supply lines into bucket before faucet hook-up. If debris is flushed into faucet, this can cause a number of problems: No water flow from spout, clogged spout aerator, clogged hand spray diverter or clogged/damaged cartridge.

7. Ensure the two 3/8" braided supply lines are securely threaded into the back of the faucet. Facing the front of the faucet, hot is left and cold is right.
8. Slide both braided supply line hoses carefully through the wall hole from step 3.
9. Where center of body of faucet will be mounted, it may be necessary to place a wood shim behind wall to ensure secure mounting of the faucet. Place #73 wall mount plate in center with horizontal channel for mounting rod placed horizontally in line with the middle of the faucet wall escutcheon. Narrow upper catch channel on wall mount plate must be at the top for proper faucet body locking. Secure plate to wall with mounting screw kit supplied.
10. Place faucet up against plate and line up left and right dome.
11. Slide mounting rod #72 through one of the middle holes on faucet wall escutcheon and completely through horizontal channel of mounting plate and lock down both ends of rod with two #71 finished nuts.
12. Lock down top of faucet escutcheon by threading #30 stem and #71 nut into top hole of body escutcheon so it locks the top of the faucet escutcheon to the upper wall plate lip.
13. Attach hot and cold faucet supply lines to hot and cold outlet supply lines.
14. Select location within reach of the faucet for the hand spray mounting bracket. Bear in mind that the hand spray hose is 2' long so distance is not too far away from faucet.
15. With mounting screw kit included with faucet, mount hand spray wall plate #80 onto wall with curved ends of plate on top and bottom facing out.
16. Secure hand spray escutcheon #85 onto wall plate with #81 set screws on top and bottom.
17. Ensuring that hand spray hose washers are inserted into both female ends of hand spray hose, attach faucet end of hose to hand spray hose male connection on the bottom of the faucet by threading hose on clockwise by hand until snug.
18. Attach hand spray end of hose onto elbow of hand spray by threading on clockwise by hand until snug.
19. Ensure hand spray sits securely in hand spray holder.

Faucet test:

20. Ensure faucet handle is in the off position.
21. Remove the spout and hand spray aerator filter to allow any particulates to be flushed straight out of the spout and hand spray. This is done by unscrewing the spout aerator cover which has two flat sides so a wrench can be attached. To remove hand spray aerator unscrew the end cap.
22. Turn hot and cold water supply lines on slowly and ensure there are no leaks anywhere on or around faucet or hand spray.
23. Turn faucet handle on and ensure a clean, steady stream of water from the faucet spout.
24. Activate hand spray by depressing button or lever on hand spray, depending on model, and ensure a clean, steady stream of water from the hand spray nozzle and water flow from the spout stops.
25. Release button or lever on hand spray.
26. Shut off faucet handle. Re-attach spout and hand spray aerator filter and cover. Faucet is now successfully installed.

Finish and care instructions for your faucets can be found at the following link:

<http://www.herbeau.com/downloads/CleaningAll.pdf>

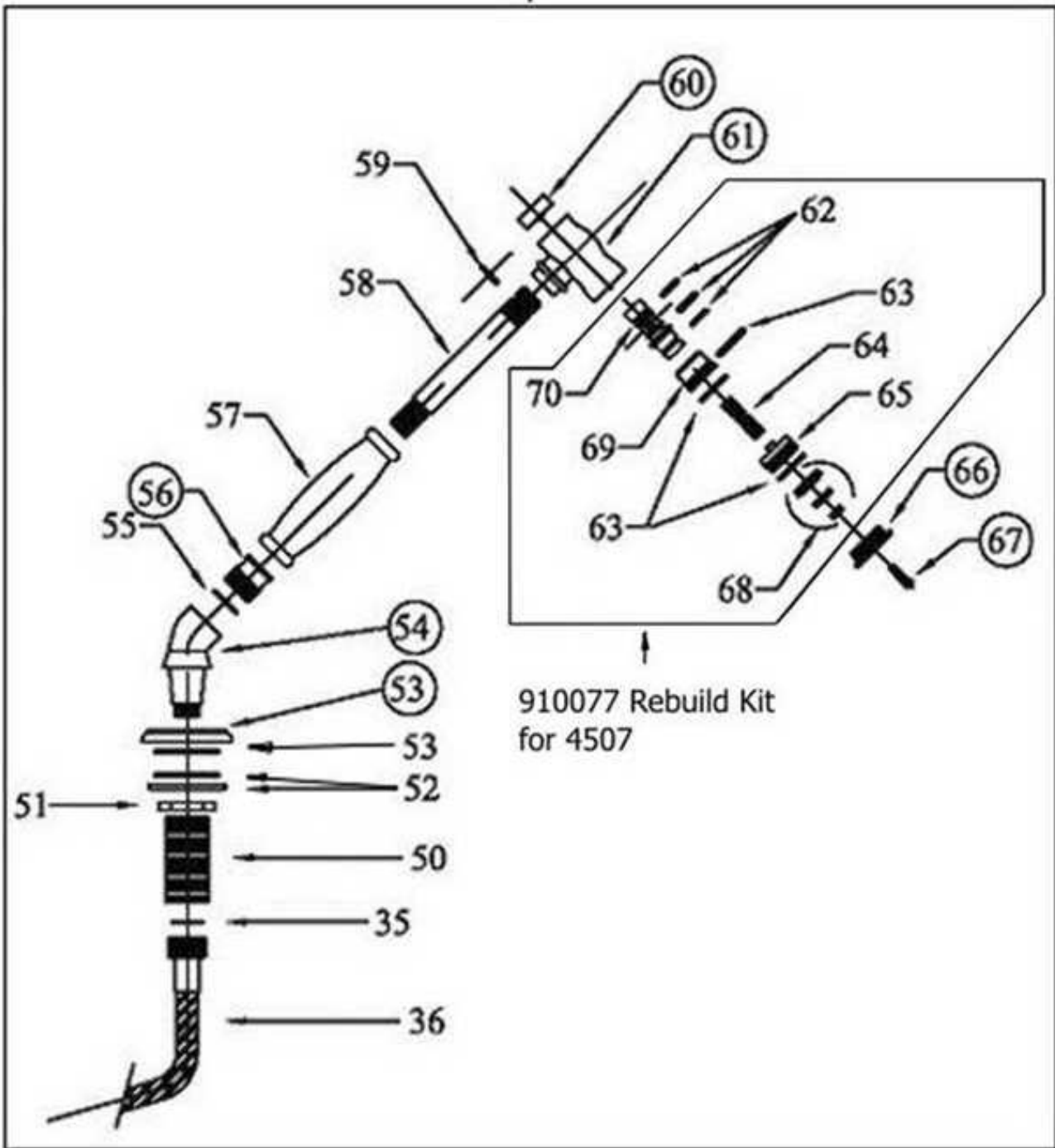
Specification sheets for your faucets can be found at the following links:

<http://www.herbeau.com/Specs/4108.pdf>

<http://www.herbeau.com/Specs/4109.pdf>

4507 - Complete Hand-spray with Hose

92





REBUILD/ MAINTENANCE PROCEDURES FOR HANDSPRAY

TOOLS NEEDED:

1. *SMALL FLAT TIP SCREWDRIVER*
2. *SMALL NEEDLE NOSE PLIERS*
3. *TOWEL AND PLUMBER'S GREASE*
4. *MEDIUM GRIT SAND PAPER*
5. *PLUMBER'S GREASE OR LITHIUM GREASE*

1. PULL OUT HAND SPRAY AND LAY ON TOWEL.
2. REMOVE THE FRONT DECORATIVE RING, 66, BY UNSCREWING COUNTER-CLOCKWISE.
3. TAKE A SMALL FLAT TIP SCREW DRIVER AND TAKE THE FLAT TIP SCREW, 67 OUT FROM THE FRONT OF THE HAND SPRAY. IN ADDITION, THE BLACK AERATOR, 68 WILL COME OUT WITH THE SCREW.

NOTE: ALWAYS TURN LEFT TO LOOSEN AND RIGHT TO TIGHTEN.**

4. AT THIS POINT, LOOSEN THE PUSH BUTTON, 60, BY TURNING IT COUNTER-CLOCKWISE. IT SHOULD BE ON HAND TIGHT.
5. WHEN THE BUTTON IS IN YOUR HAND YOU WILL SEE A SMALL THREADED PART ON THE BOTTOM OF THE BUTTON
6. NEXT, TAKE THE NEEDLE NOSE PLIERS AND FIT THEM INTO THE OUTER HOLES OF THE BRASS AERATOR, 65, IN THE FRONT OF THE UNIT WHERE THE WATER EXITS AND UNSCREW COUNTER-CLOCKWISE
7. WHEN THE BRASS AERATOR COMES OUT THERE WILL ALSO BE A SMALL SPRING, 64, ATTACHED TO THE BRASS AERATOR, 65.
8. WITH THE AERATOR OUT, AT THE BACK OF THE HAND SPARAY HEAD, 61, TAKE YOUR FINGER AND PUSH THE BRASS CARTRIDGE, 69 AND 70, OUT OF THE HEAD THROUGH THE FRONT.

9. AT THIS POINT TAKE A CLEAN RAG AND WIPE OUT THE INTERIOR OF THE SPRAY HEAD, 61.
10. TAKE A SMALL PIECE OF THE SAND PAPER AND ROLL IT UP SO IT WILL FIT THROUGH THE BACK OF THE #61 HAND SPRAY HEAD ROUND INNER CHANNEL WHERE THE #70 PISTON SLIDES IN AND OUT OF. SAND DOWN THE INNER CHANNEL UNTIL IT IS CLEAN AND SMOOTH. THIS IS WHERE THE PISTON WILL STICK IF THERE IS NOT ENOUGH LUBRICATION OR THERE IS CALCIUM OR COROSSION BUILD-UP.
11. TAKE THE NEW CARTRIDGE AND PUSH IT INTO THE BODY THE SAME WAY YOU TOOK OUT THE OLD ONE. THE END THAT HAS THE THREADED PART GOES IN TO THE PUSH BUTTON END.
12. TAKE THE SPRING, 64 AND ATTACH IT TO THE BACK OF THE BRASS AERATOR, 65. SCREW IT INTO THE BODY. TO THE RIGHT, AND TIGHTEN IT WITH THE NEEDLE NOSE PLIERS.
13. TAKE THE BLACK AERATOR, 68, WITH THE SMALL FLAT TIP SCREW, 67 AND SCREW IT INTO THE BRASS AERATOR, 65. TURN TO THE RIGHT, SNUG. POSITION SCREW FOR PROPER SPRAY PATTERN.
14. SCREW THE FRONT DECORATIVE RING, 66, ON BY THREADING IT CLOCK-WISE.
15. TAKE THE PUSH BUTTON, 60, AND SCREW IT CLOCK-WISE INTO THE CARTRIDGE IN THE BODY TIGHTLY.
16. TURN THE WATER ON, PUSH THE BUTTON IN, AND CHECK FOR LEAKS.
17. IF THERE ARE ANY ADDITIONAL PROBLEMS, PLEASE CONTACT TECHNICAL.

NOTE: LUBRICATE ALL MOVING INSIDE METAL PARTS WITH PLUMBER'S GREASE.

SUPPORT@HERBEAU.COM

Brass diverter block maintenance instructions

Tools needed

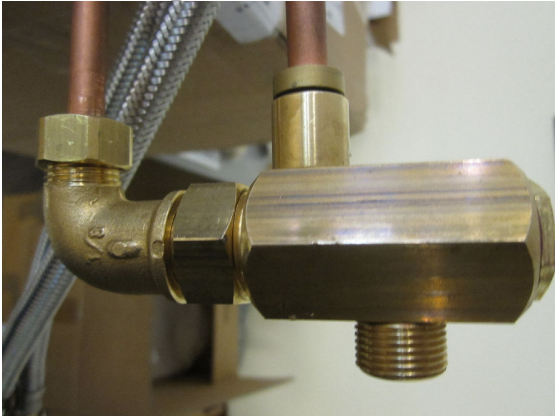
Adjustable wrench

2 slotted screwdrivers

CLR or water and vinegar

Compressed air

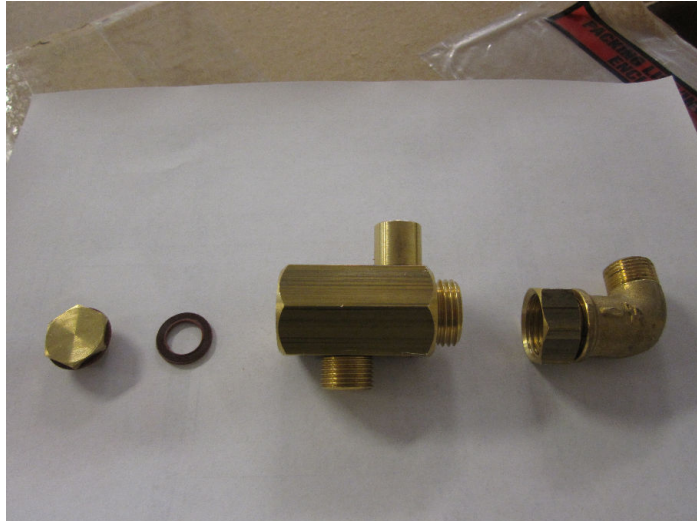
1. The brass diverter block for older style Herbeau faucets with hand sprays can be repaired and maintained by following the next steps.



2. The picture above shows the diverter block attached to a faucet which in this case has solid connections. Other lines of faucets have a braided flexible supply line connection that connects to the 90 degree elbow on diverter block.



3. The above picture shows the diverter block after being removed from faucet supply lines. To remove block, unthread 90 degree elbow connection nut counter-clockwise, then unthread block counter-clockwise from main supply line.



4. The picture above shows the 90 degree elbow and thin hex nut unthreaded counter-clockwise from both ends of the block.



5. The picture above shows the head on look into the 90 Degree elbow end with elbow removed. The slotted end of the internal diverter pin is visible.



6. The above picture shows the head on look into the shallow hex nut side with the hex nut removed. The flat slotted plate that is attached to the other end of the internal floating diverter pin is visible here.

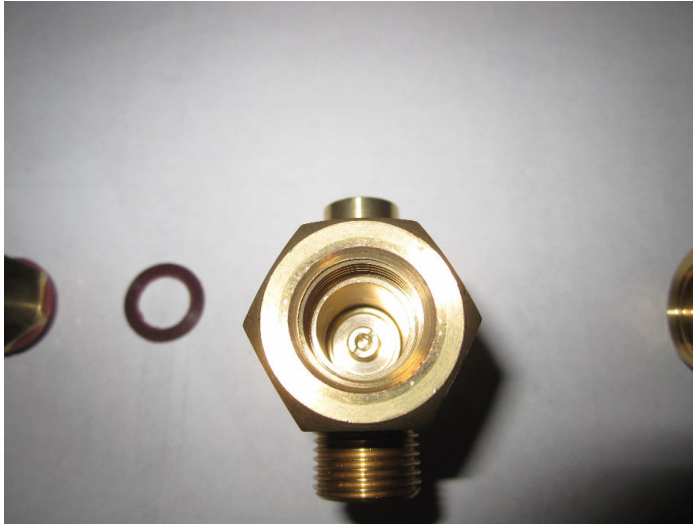


7. The above picture shows the internal floating diverter pin removed from inside of the block. To remove pin, use two slotted screw drivers inserted into both ends of the diverter block and unthread both ends counter-clockwise from each other.
8. Soak diverter block in ‘CLR’ or 50/50 vinegar and water to clean out any debris and calcification. Blow out inside of block with compressed air. Make sure black rubber cone gasket is in good condition on diverter pin. If diverter pin is bad, then it can be replaced by PART #930035 – LIST \$118.00.
9. One other option is to remove the complete diverter round cartridge thimble, Part #810001, as shown below:



Thread a fine thread 7/16 bolt into the opening of the diverter

Block so as to catch the threads on the opening end the Round diverter thimble. Pull 810001 thimble out. When Inserting new thimble in, make sure holes on thimble are at the 6 o'clock position. Part #810001 / List \$157.00.



10. To re-assemble diverter block, reverse above steps 3-7. Take Care when re-inserting diverter pin assembly that both ends of pin are inserted into correct ends of block and do not thread slotted brass end cap back onto diverter pin to the point where a slotted screw driver cannot be placed into slotted end to remove it again.

4101 & 4102 - Instruction for De Dion Cartridge exchange



TOOLS NEEDED FOR DE DION CERAMIC CARTRIDGE REMOVAL AND REPLACEMENT (CLEAN SOFT CLOTH, ADJUSTABLE PLIERS, 50/50 SOLUTION WHITE VIEGAR AND WATER OR CLR, MILD SOAP AND PLUMBER'S GREASE). IF FAUCET IS STILL CONNECTED TO WATER LINES, TURN OFF WATER SUPPLIES.



REMOVE TOP ROUND SCREW, 920009XX, HOLDING HANDLE ASSEMBLY ON BY UNSCREWING COUNTER-CLOCKWISE. SET ROUND SCREW ASIDE.



PULL HANDLE ASSEMBLY STRAIGHT UP AND OFF. SET ASSEMBLY ASIDE.



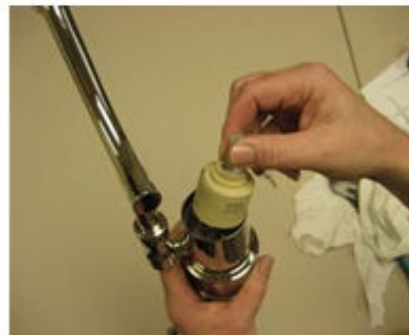
USING ADJUSTABLE PLIERS, CAREFULLY LOOSEN CARTRIDGE HOLDING NUT, 920002XX BY PLACING A SOFT CLEAN CLOTH OVER IT AND TURNING COUNTER-CLOCKWISE.



IF ADJUSTABLE PLIERS ARE NOT NEEDED, REMOVE CARTRIDGE HOLDING NUT BY UNSCREWING COUNTER-CLOCKWISE.



LIFT CARTRIDGE HOLDING NUT OFF, CLEAN OFF ENTIRE NUT WITH A MILD SOAP SOLUTION AND APPLY PLUMBERS GREASE TO THREADS. SET ASIDE.



REMOVE OLD CERAMIC CARTRIDGE BY LIFTING OUT AND SET IT ASIDE. CAREFULLY CLEAN ANY DEBRIS FROM INSIDE OF CARTRIDGE COMPARTMENT.



WHEN
 INSTALLING
 NEW CERAMIC
 CARTRIDGE
 (930003),
 ENSURE 2 MALE
 POSTS ON
 BOTTOM OF
 CARTRIDGE SIT
 SNUG INTO
 THE 2 FEMALE
 RECEPTACLES
 IN THE
 BOTTOM OF
 THE
 CARTRIDGE
 COMPARTMENT.



RE-INSTALL
 CARTRIDGE
 HOLDING NUT
 BY SCREWING
 IT ON BY HAND
 CLOCKWISE
 UNTIL TIGHT.



RE-INSTALL HANDLE ASSEMBLY ON TOP OF CARTRIDGE POST AND
 HAND TIGHTEN ROUND SCREW CLOCK-WISE UNTIL TIGHT. CHECK FOR
 PROPER OPERATION OF HANDLE ON CARTRIDGE AND TURN ON WATER
 SUPPLIES.



Herbeau®
 L'Art du Sanitaire depuis 1857

INSTRUCTIONS FOR REMOVING CALCIFIED CARTRIDGE NUT

Note: If cartridge nut threads are calcified and nut is difficult to unscrew, take a 50/50 solution of white vinegar and water or CLR and drip carefully as shown in the three following photos between the small thread gap where the cartridge nut and outside edge of the faucet body meet. This should loosen up any calcium deposits on the cartridge nut threads. Let this solution work its way down into the threads for a few hours to as long as 24 hours.

NOTE: Be careful to not get any solution or let solution stand on the finish of the faucet as this may cause streaks in the finish if you have weathered copper/brass.



Herbeau Creations of America

3600 Westview Dr., Naples, FL 34104

Phone 239.417.5368, Fax 239.417.8951, Toll-free 800.547.1608, Fax 800.547.0084



Herbeau®
L'Art du Sanitaire depuis 1857

ESTELLE CARTRIDGE REPLACEMENT INSTRUCTIONS

IMPORTANT: TURN OFF HOT AND COLD WATER SUPPLIES TO FAUCET BEFORE STARTING

TOOLS REQUIRED

Clean, soft cloth
Wrench or Visegrips

INSTRUCTIONS

Step 1) Prepare a work area by removing all clutter. Lay a clean, soft cloth on the counter as an area to place all removed pieces.

Remove the knob screw from the top of the faucet by turning the ceramic button on the knob counter-clockwise. The screw should be easily removed by hand.



Step 2) Once removed, set the screw aside on the clean, soft cloth.

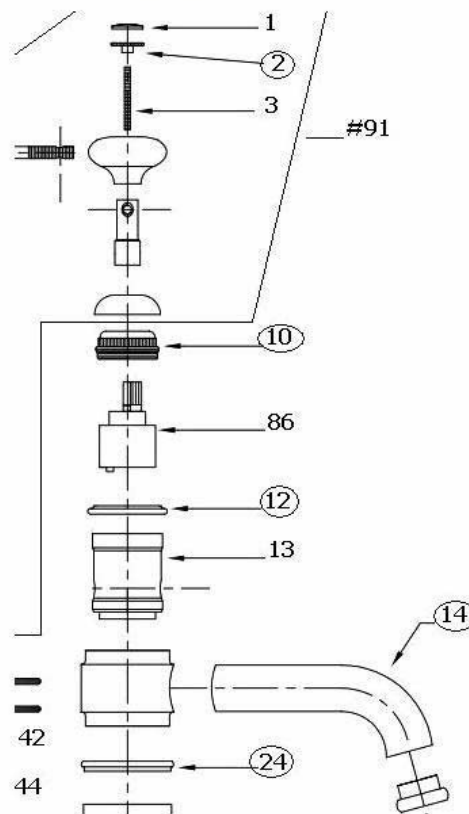


Step 3) Gently remove the handle assembly by lifting it up and off of the cartridge stem. Set the handle assembly aside on the clean, soft cloth.



STEP 4.) Unscrew #10 cartridge nut counterclockwise and remove. It may be necessary to put a protective cloth over the nut and remove it with pliers or vise-grips if it is bound up by calcium deposits.

STEP 5.) Remove #86 cartridge and clean out cartridge seat inside faucet to ensure a clean, smooth surface. Insert a new cartridge, aligning the two posts on bottom of cartridge with two post holes in faucet base. Reverse steps 1-4 and then turn water supplies back on and test for proper operation.



NOTE: Handle assembly may fit on cartridge stem in only one direction. This is normal. To adjust handle position to the front, back or either side, loosen faucet mount and turn complete faucet assembly in direction that will align the handle assembly at either 12, 3, 6 or 9 o'clock position. Normal position is with handle assembly mounted to the side of the faucet to allow ease of use of the handle and to clear back splash if needed. Spout turns 360 degrees so faucet can be turned 360 degrees.

REPLACING TOP WOOD KNOB ON ESTELLE HANDLE



1. Remove handle assembly from faucet by unscrewing top screw counter-clockwise completely and lift handle off of faucet body. Remove handle screw completely.



2. Note set screw inside of wood knob.



3. Use a 4mm Allen wrench and unscrew the metric set screw counter-clockwise completely. If the screw is slotted, use a slotted screwdriver.



4.



5.

After removing metric set screw, unscrew side handle counter-clockwise from side of wood knob.



6.

Remove center brass stem from wood knob.

7. To install new wood knob, reverse steps 1-6.



Herbeau
L'Art du Sanitaire depuis 1857

TROUBLESHOOTING REMOVAL AND REPLACEMENT FOR ESTELLE DIVERTER

TOOLS REQUIRED

Clean, soft cloth
Flat head screwdriver
Phillips head screwdriver

INSTRUCTIONS

Step 1) Prepare a work area by removing all clutter. Lay a clean, soft cloth on the counter as an area to place all removed pieces.

Remove the knob screw from the top of the faucet by turning the ceramic button on the knob counter-clockwise. The screw should be easily removed by hand.



Step 2) Once removed, set the screw aside on the clean, soft cloth.



Step 3) Gently remove the handle assembly by lifting it up and off of the cartridge stem. Set the handle assembly aside on the clean, soft cloth.



Step 4) Remove the top escutcheon ring and set it aside on the clean, soft cloth.



Step 5) Remove the spout by sliding it up and off of the faucet body. Set it aside on the clean, soft cloth.



Step 6) ACCESS PORT/ Using a flat head screwdriver remove the slotted screw located on the front spout side of the faucet body by turning counter- clockwise Set the screw aside on a clean, soft cloth. You will then see the slotted round end of the diverter pin assembly.



Step 7) Insert a large Phillips head screwdriver into the access port opening in the faucet body. Use gentle pressure on the Phillips head screwdriver to stabilize the diverter, while using the flat head screwdriver through the open hole on the other side of the faucet body to unscrew the diverter from the faucet body. Even though the end of the diverter has a slot, it is necessary for the Phillips screw driver to basically jam the Diverter screw from turning.



Step 8) Remove the diverter screw and set it aside.



Step 9) Using one of the screwdrivers, gently push the diverter nut out of the faucet body.

Inspect the faucet body for any foreign materials or sediment. If needed, clean out the faucet body with mild soap and water, and dry with a clean, lint free cloth.

Replace the diverter by reversing steps 1-8 above.



OPEN END

ACCESS PORT END>



ASSEMBLED DIVERTER>



Herbeau Creations of America

Phone: (239) 417-5368 Toll Free: (800) 547-1608 Fax: (239) 417-8951 www.herbeau.com

FIRE CLAY FARM HOUSE SINK INSTALLATION GUIDELINES

TOOLS THAT MAY BE NEEDED:

SABER OR KEYHOLE SAW
RULER AND PENCIL
SANDING BLOCK
SEALANT (NOT INCLUDED)
SAND PAPER
LEVEL
SAFETY GLASSES

The cabinet and supporting framework should be reinforced to hold 225 pounds for 4603 and 4614 single and 245 pounds for 4613 and 4615 double bowl sinks securely once the sinks are installed. For ideas on supporting framework, please see our 5701 and 5702 wooden stand specification sheets.

Note: The dimensions given for any fire clay product is nominal. The material is wet clay fired in an oven; therefore, there is minimal control over the finished size. Variations of up to ¼” in size can occur due to these fire clay characteristics. Because of these dimensional characteristics, we strongly recommend that the cabinet and / or countertops be cut to actual sink measurements after sink is on site. There is no standard fitting framework or supporting brackets. **(Because fireclay is not a precision made product, the sink may sit slightly unlevel and may need to be shimmed for level installation.)**

These sinks can be installed flush with the front of the cabinet or extend beyond the front of the cabinet by approximately 1” in addition to the top extended lip.

Note: Due to the variety of possible installations with these sinks, installation may require procedures other than those presented in these instruction guidelines.

TILE-IN INSTALLATION

Note: The underlayment may be slightly smaller than the sink but must not support the sink. Consult the tile contractor to determine the type of underlayment to be used.

1. These sinks are designed for installation slightly higher than, flush with or slightly lower than the surrounding tile.
2. Measure the sink apron and cabinet opening to make sure sink apron will fit into cabinet opening. If necessary, sand opening or add wood filler strips.
3. Place a thin layer of sealant at each corner of the supporting frame where it will contact the sink.
4. Gently position the sink within the frame, locating the sink in the center of the cabinet.
5. Make sure the sink rim is level all around. Adjust or shim between the sink and the support if needed for proper fit.
6. Use the proper sealant for this type of installation between tile and sink to allow for expansion and contraction of tile counter over time. Silicon based grout is a good option for this.
7. Assemble the strainer or garbage disposal to the sink drain hole or holes.

UNDERCOUNTER INSTALLATION

1. The supporting frame should be positioned so that the top of the sink rim (when placed inside the cabinet) is level and flush with the top surface of the cabinet perimeter support or underlayment at the cut out area.
2. Measure sink apron and cabinet opening to make sure sink apron will fit into cabinet opening. If necessary, sand opening or add wood filler strips.
3. Place a thin layer of sealant at each corner of the supporting frame where it will contact the sink.
4. Gently position the sink within the frame, locating the sink in the center of the cabinet.
5. Make sure the sink rim is level and flush with the cabinet perimeter. Adjust or shim between the sink and the support if needed to obtain proper fit. The top of the sink rim must be flush with the top of the cabinet perimeter in order to obtain proper contact with the underside of the countertop.

6. Assemble the strainer or garbage disposal to the sink drain hole or holes. Install per Garbage disposal manufacturers specifications and take care to “not” over-tighten the flange or drain as this may crack the sink and void the warranty.
7. Using sealant between the apron and the cabinet is optional and up to the buyer’s discretion.

SOLID SURFACE INSTALLATION

Due to various cut out sizes possible, no template is provided

1. Follow steps 1-6 as outlined in the under counter sink installation section.
2. Carefully measure the countertop to determine the exact location of the cut out.
3. Measure the distance from the finished wall to the center of the sink’s faucet hole or holes. This dimension will be used to locate the faucet hole centerline and back edge of the cut out on the countertop. Make sure the sink is positioned to provide adequate clearance between the faucet and the backsplash, finished wall or support frame. This will ensure full faucet operation when installed.
4. From the back edge of the countertop, locate the dimension from the finished wall to the center of the faucet holes and draw a center line. Subtract the proper distance from the faucet hole centerline to locate the back edge of the cut out. Trace the cut out opening on the countertop using a soft lead pencil. Locate the faucet hole or holes.
5. Cut out the opening in the countertop, carefully following the pencil line. Use an orbital sander or sanding block to smooth the edge of the cut out area and remove all saw marks. For laminate type countertops, all exposed unlaminated surfaces near the cut out opening must be adequately finished and sealed to prevent damage from water absorption.
6. Drill required faucet hole location or locations and install faucet per manufacturer’s instructions.
7. Clean the top of the sink rim making sure the surface is free from any debris. Clean the bottom of the countertop around the cut out area making sure the surface is smooth and free of defects.

8. Apply a generous bead of sealant around the sink rim where the sink rim and countertop meet.
9. Position the countertop over the sink, being careful the sealant provides a complete seal between the sink rim and the bottom of the countertop. Immediately wipe away any excess sealant with a damp cloth. Fill any voids between the rim and the countertop with sealant.
10. Sealing the gap between the apron and the cabinet is optional and up to the buyer's discretion.

CLEANING AND CARE

A routine cleaning with a mild cleanser such as Astonish will help maintain the finish of the sink. Do not use abrasive cleansers as they may scratch the surface. Avoid soaking dishes for a very long time and refrain from leaving coffee grounds or tea bags in the sink.

Flamande, Royale and Monarque Side Lever Cartridge Replacement Instructions

Tools needed

Clean cloth or 1" X 3" piece of rubber

Adjustable wrench or vise grips

Plumber's grease

Scotch Tape

1. Turn off hot and cold water supply lines below sink.
2. Open up faucet side lever handle to the on position to release any residual water.
3. Unscrew #14 handle ball screw counter-clockwise and set aside.
4. Carefully wiggle and pull side lever handle base assembly #13 straight off of the square #11 or #86 cartridge post and set aside.
5. Depending on age of faucet, #12 cartridge lock down nut will either be round with ridges around the perimeter or have a hex shape.
6. If nut is round, place a clean cloth or flexible strip of rubber around the nut to protect the finish and clamp down carefully with vise grips or wrench. Unscrew the nut counter-clockwise and set aside.
7. If nut is a hex shape, place a clean cloth over the nut to protect the finish, put an adjustable wrench over the nut and unscrew the nut counter-clockwise. Set nut aside. (Note: Take Care to not scrape nut against body opening when removing.)
8. #11 or #86 cartridge will come right out. Set old cartridge aside.
9. Note on replacement cartridge, there will be two posts on the bottom of the cartridge that will only line up one way with two holes in the cartridge seat of the faucet.
10. Clean out any debris in faucet cartridge seat and main body cartridge nut threads. Apply a small amount of plumber's grease to main body cartridge nut threads.
11. Put a small amount of plumber's grease on bottom gaskets of new cartridge and threads of #12 cartridge lock down nut. Examine new cartridge for any possible cracks.
12. Place new cartridge in base, carefully aligning two posts into two post holes.

13. Wrap a piece of scotch tape around outside smooth portion of cartridge lock down nut to protect against scraping against body opening.
14. While pressing cartridge in place, screw #12 cartridge lock down nut clockwise over cartridge until nut is secure. (You may need to carefully put cloth or rubber over the cartridge to tighten with wrench again.)
15. Carefully remove scotch tape from outside of cartridge lock down nut.
16. Press handle base assembly #13 back onto square cartridge post.
17. Screw #14 ball screw and washer if there was a washer with screw, clockwise back into #13 handle base until secure.
18. Ensure proper movement of handle to out-on position and back and forth for hot/cold. Put handle into off position-in vertical position.
19. Turn hot and cold supplies under sink back on and ensure there is no leakage coming from cartridge area. Turn handle on to hot and cold to ensure proper operation of faucet.
20. Cartridge is now successfully installed.

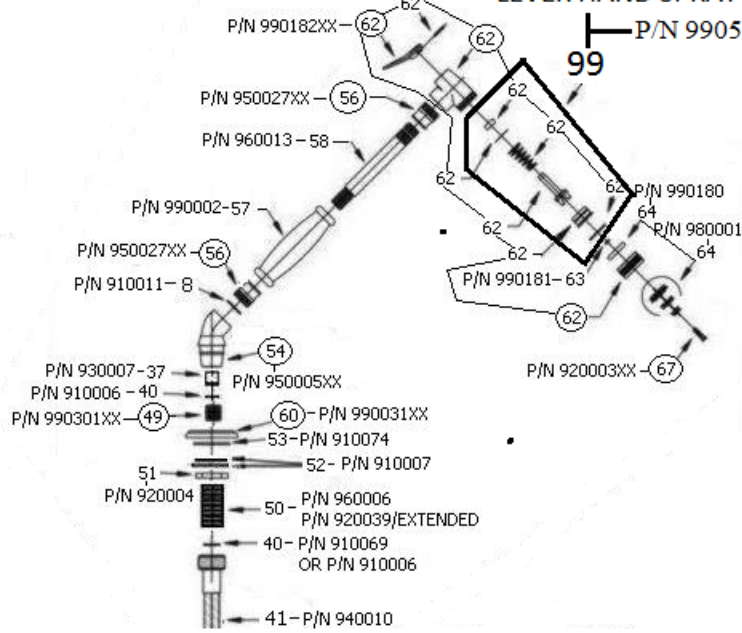
Rebuild procedure for Lever Style Hand Spray

Tools Needed:

1. Slotted screw driver
2. Plumbers or Lithium grease
3. 2" tall X ½" diameter wooden or metal dowel slightly smaller than hand spray face opening.
4. Small needle nose pliers.
5. Pliers
6. Vise
7. Very small hole punch to push our metal dowel pin

1. Turn off hot and cold water supplies to faucet.
2. Turn on hot and cold faucet handles to empty out any residual water and depress lever on hand spray to empty out any residual water.
3. Unscrew #62 front cover assembly counter-clockwise and set aside.
4. Pull out #62 inner brass cap with rubber o-ring and set aside.
5. Set 2" tall dowel on table or place in vise to stabilize.
6. Place hand spray head front face down over dowel and depress firmly to compress inner #62 spring and pin assembly so #62 hand spray back lever is sticking out and #62 metal dowel pin is visible.
7. Take small hole punch and push #62 metal dowel pin through until it can be removed from other side of inner #62 piston assembly with needle nose pliers.
8. Remove inner #62 piston and spring from assembly.
9. Remove inner #62 metal washer and rubber grommet from back end of hand spray-these seal the back hole where the inner piston moves back and forth when depressing the lever.
10. Apply plumbers or Lithium grease to all new rubber parts sparingly. Insert new #62 grommet into back hole and place new #62 flat metal washer over it.
11. Insert new #62 spring and piston assembly into hand spray head.
12. Place hand spray head face down over dowel and depress firmly to compress spring and piston assembly far enough in so small dowel pin hole is exposed at back of hand spray head.
13. Set #62 lever over piston and line up dowel pin holes with piston dowel pin holes.
14. Push dowel pin back into and through lever and piston assembly so lever and piston can set back fully into hand spray.
15. Push new #62 inner brass cap with rubber o-ring into face of hand spray head completely.
16. Screw #62 front cover assembly clockwise securely onto hand spray front end.
17. Attach hand spray back onto hose, turn faucet supply lines back on and test out hand spray.

LEVER HAND SPRAY REBUILD KIT



Instructions for cleaning and/or replacement of cartridges for “Lever Style” kitchen, bath and bar faucets

Tools needed:

Clean cloth or rag

Small adjustable wrench

Adjustable pliers

Plumber’s grease

1. First, shut off hot and cold water supply under counter or wherever located.



2. Lever handles are held on by compression over main body o-rings and white serrated plastic inserts on end of cartridges.
3. For vertical lever faucet, with lever in the up or off position, pull handle with a good amount of force directly away from the main body.





For horizontal lever faucet, levers are held on by vertical screws that are unthreaded counter-clockwise. Unthread bell escutcheons counter-clockwise.



4. With an adjustable wrench or pliers, unthread hot and cold $\frac{1}{4}$ turn ceramic cartridge counter-clockwise. If only cleaning is needed, please soak cartridge in a mixture of 50/50 distilled white vinegar and water or straight “CLR” calcium remover for approximately three hours.

5. Ensure cartridge seat in main body is clean and free of any debris or the cartridge gaskets may get cut and the faucet will leak.
6. Slowly and partially turn the hot and cold water supplies on below sink or wherever located and ensure faucet is flushed clean of any debris.
7. Shut hot and cold water supplies off below sink or wherever located.
8. Thread hot and cold cartridges back onto faucet by hand until snug. (For vertical lever style, part number 930008 is cold cartridge on right side facing front of faucet and part number 930009 is hot cartridge on left side facing front of faucet. For horizontal lever style faucets such as Royale 3327, the cold cartridge is 930009 and hot cartridge is 930008.)
9. Turn hot and cold water supplies on below sink or wherever located and if faucet is leaking at all or dripping from the spout, tighten hot and cold cartridges with adjustable wrench, if necessary, until dripping stops. (DO NOT OVERTIGHTEN THE CARTRIDGES AS THIS CAN DAMAGE THE CARTRIDGE GASKETS AND CAUSE LEAKING!!!!) Turn hot and cold supplies off.
10. Ensure hot and cold cartridges are turned off.
11. For vertical lever faucet, apply a small amount of plumber's grease inside of each handle body where white serrated inserts fit. Apply a small amount of plumber's grease on rubber o-rings on main body where handles slip on.
12. Ensure white plastic serrated inserts are pressed fully onto the tip of each cartridge.
13. Turn cartridge nipples to the closed position fully.
14. Push handle assemblies back onto main body with handles in the off or up position. For horizontal lever faucets, thread bells back on and install lever handles back onto cartridges with vertical handle screws clockwise with the handles in the off position.
15. Turn hot and cold supplies on and ensure faucet works correctly.

Instructions for cleaning and/or replacement of cartridges for “Royale” kitchen and bath cross handle faucets, “Monarque” and “Pompadour” bath faucets. (This excludes the 3050 Royale Verseuse model.)

Tools needed:

2 slotted screwdrivers

2 clean cloths or rags

Rubber mallet or hammer and small soft piece of wood

Small adjustable wrench

Adjustable pliers

Plumber’s grease

1. Shut off hot and cold water supply lines to faucet, then turn hot and cold faucet handles to on position to drain out any remaining water.
2. For older style Royale faucets with hot and cold ceramic inserts held on by double sided adhesive tape, pry the hot and/or cold ceramic inserts off carefully so as to be able to re-use double sided adhesive tabs beneath ceramic. Double sided adhesive tabs can be reordered under Part# 980005 through your authorized Herbeau retailer.
3. For newer style ceramic inserts set into finished finials and held in by rubber o-ring, carefully pry out hot and/or cold ceramic finial assembly from top of cross handle.
4. With slotted screwdriver, remove slotted screw counter-clockwise from center of cross handle.
5. Remove washer from center of cross handle.
6. Remove cross handle.
7. Remove cross handle stem.
8. Remove bell housing by unthreading counter-clockwise. (You may be able to put a clean rag over the bell housing and use adjustable pliers or vise-grips to carefully remove it as it may be on very tight.)
9. For Monarque faucets, remove central ceramic insert by prying insert off if it’s an older style with double sided tape. If newer style with push in plug, pry off carefully as ceramic insert has small plug with rubber o-rings so as to be able to push into handle cavity. Remove central handle screw by unscrewing counter-clockwise, remove stem under handle and unscrew cartridge dome counter-clockwise to reveal hex head of cartridge.
10. For Pompadour faucets, carefully take two slotted screwdrivers with a thin cloth covering the sharp edges and pry up or out under round handle equally on both sides to pry round handle off. Handles are held on by compression over plastic gears.
11. Unthread handle escutcheon counter-clockwise and set aside.
12. Unthread brass screw holding plastic gear counter-clockwise and remove plastic gear from cartridge nipple and set aside.
13. Remove hot and/or cold cartridge by turning counter-clockwise with adjustable wrench on hex head of cartridge.
14. If only cleaning cartridge, soak cartridge for approximately three hours in a solution of 50/50 vinegar and water or straight “CLR” type of calcium remover, then flush out cartridge.
15. Clean out inner base of cartridge seat in valve and ensure there is no debris in seat.

- 16.(Very important step!!!) Slowly turn hot and cold water supply on partially and flush out any remaining debris in hot and cold valves, then shut hot and cold water supply off.
- 17.If installing new or cleaned cartridges, thread cartridges by hand for now back into hot and/or cold valve seats clockwise. Be careful not to over tighten.
- 18.With cartridge or cartridges re-installed, slowly and carefully turn the hot and cold water supplies on and check for any leaks from the cartridge seats or dripping water from the spout. If there are any leaks, tighten cartridges a bit more by hand or, if necessary, with adjustable wrench until dripping or leaking stops.
- 19.Turn hot and cold cartridge stems counter-clockwise to ensure proper water flow from spout. Turn cartridges off.
- 20.For Royale faucets, replace bell domes by threading on clockwise by hand until snug.
- 21.Replace cross handle stems and cross handles over cartridges.
- 22.Replace cross handle slotted screws and washers by threading screws clockwise until snug.
- 23.For older style cross handles, replace double sided adhesive tape into top of cross handle and affix hot and cold ceramic inserts.
- 24.For newer style finial inserts, apply a small amount of Plumber's grease to insert rubber o-rings and push hot and cold inserts into top of cross handles.
- 25.For Pompadour faucets, insert plastic gear on cartridge nipple and thread brass screw clockwise into cartridge nipple to hold gear in place.
- 26.If necessary, place a small amount of Plumber's grease deep inside of Pompadour handle to ease insertion of handle onto gear. Press handle firmly or, if necessary, with a rubber mallet or hammer and soft board, tap handle back onto plastic gear until secure.
- 27.For Monarque faucets, reverse removal steps listed in step 9.
- 28.Turn hot and cold water supply lines on and ensure again for proper operation.



**REPLACEMENT OF DIVERTERS IN DIVERTER BLOCK ASSEMBLY
MODELS 3027, 3327, 4110, 4207, 4208, AND 4209**

TOOLS REQUIRED

Flat-head screwdriver
7/16 fine thread bolt
Rigid dental pick tool.

INFORMATION

Prior to any disassembly of the unit, make sure the water supplies are shut down and the lines are drained.

INSTRUCTIONS

1. First, locate the diverter block. It is located beneath the counter-top. The diverter is within the diverter block.



2. Locate and remove the brass screw cap on the end of the diverter block.

2a. If 7/16 bolt will not catch the thread then use dental pick tool to catch bottom hole in diverter tube and pull tube out of block.

3. Thread the 7/16 fine thread bolt into the opening in the diverter block. To remove the diverter, pull the bolt out of the diverter block.
4. When replacing the diverter, make sure the large hole in the diverter faces the 6 o'clock position, toward the handspray hose.



5. Replace the old diverter with the new one, and reverse the disassembly procedure to complete the procedure. To order new diverter, order Part# 810001 through your authorized Herbeau retailer.

REPLACING WOOD OR CERAMIC HANDLE ON HAND SPRAY.

IT IS NECESSARY TO BREAK LOOSE THE “LOCTITED” THREADS WHERE THE HAND SPRAY HEAD OR HAND SPRAY ELBOW ARE THREADED ONTO THE CENTRAL BRASS STEM. THESE THREADS ARE ORIGINALLY SEALED WITH LOCTITE BRAND THREAD LOCK WHICH CAN BE PURCHASED AT ANY HARDWARE STORE SUCH AS LOWES OR HOME DEPOT.

WHEN RE-ATTACHING THE HEAD OR ELBOW, USE THE BLUE LOCTITE BRAND THREAD LOCK ON THE THREADS PER LOCTITE MANUFACTURER INSTRUCTIONS AND RE-ATTACH THE HEAD OR ELBOW AND LET THE THREADLOCK SET PER LOCTITE INSTRUCTIONS.

IT IS IMPORTANT TO ALIGN THE HEAD AND ELBOW IN THE ORIGINAL DIRECTION WITHOUT OVERTIGHTENING AND BREAKING THE CERAMIC/WOOD